



**ELECTRONIC COPY**

## LABORATORY GROWN DIAMOND REPORT

September 13, 2025	
IGI Report Number	LG733584767
Description	LABORATORY GROWN DIAMOND
Shape and Cutting Style	EMERALD CUT
Measurements	8.71 X 6.02 X 4.07 MM

## GRADING RESULTS

Carat Weight	2.08 CARATS
Color Grade	F
Clarity Grade	VVS 2

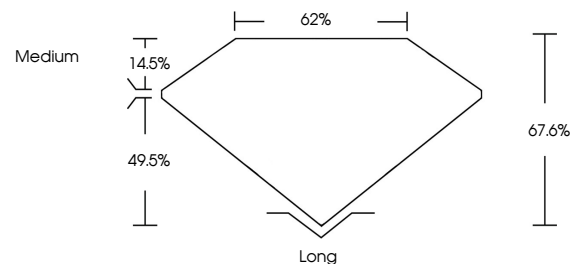
### ADDITIONAL GRADING INFORMATION

Polish	EXCELLENT
Symmetry	EXCELLENT
Fluorescence	NONE
Inscription(s)	 LG733584767

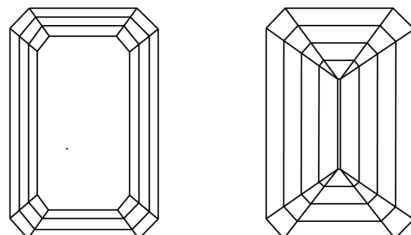
Comments: This Laboratory Grown Diamond was created by Chemical Vapor Deposition (CVD) growth process.  
Type IIa

LG733584767  
Report verification at [igi.org](https://igi.org)

## PROPORTIONS

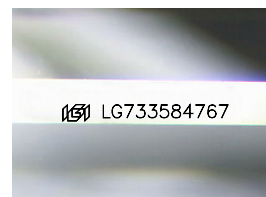


## CLARITY CHARACTERISTICS



## KEY TO SYMBOLS

Red symbols indicate internal characteristics.  
Green symbols indicate external characteristics.



Sample Image Used

## COLOR

D E F G H I J Faint Very Light Light

## CLARITY

IF	VS <sup>1-2</sup>	VS <sup>1-2</sup>	SI <sup>1-2</sup>	I <sup>1-3</sup>
Internally Flawless	Very Very Slightly Included	Very Slightly Included	Slightly Included	Included

## LABORATORY GROWN DIAMOND REPORT



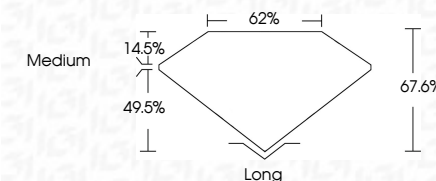
September 13, 2025	
IGI Report Number	LG733584767
Description	LABORATORY GROWN DIAMOND
Shape and Cutting Style	EMERALD CUT
Measurements	8.71 X 6.02 X 4.07 MM

## GRADING RESULTS

Carat Weight	2.08 CARATS
Color Grade	F
Clarity Grade	VVS 2

### ADDITIONAL GRADING INFORMATION

Polish	EXCELLENT
Symmetry	EXCELLENT
Fluorescence	NONE
Inscription(s)	 LG733584767
<p>Comments: This Laboratory Grown Diamond was created by Chemical Vapor Deposition (CVD) growth process.</p> <p>Type IIa</p>	



September 13, 2025  
 IGI Report No LG733584767

<b>GI Report No</b>	<b>L67935947</b>
<b>GENERAL CUT</b>	<b>2.08 CARATS</b>
<b>3.71 X 4.03 X 4.07 MM</b>	<b>F</b>
<b>Carat Weight</b>	<b>VVS 2</b>
<b>Color Grade</b>	<b>GSI 6%</b>
<b>Clarity Grade</b>	<b>GSI 6%</b>
<b>Depth</b>	<b>Medium</b>
<b>Table</b>	<b>Long</b>
<b>Girdle</b>	<b>EXCELLENT</b>
<b>Culet</b>	<b>EXCELLENT</b>
<b>Polish</b>	<b>NONE</b>
<b>Symmetry</b>	
<b>Fluorescence</b>	

**Comments:**  
This Laboratory Grown Diamond was created by Chemical Vapor Deposition (CVD) growth process.

© IGI 2020, International Gemological Institute

FD - 10 20



THIS DOCUMENT WAS PRODUCED WITH THE FOLLOWING SECURITY MEASURES: SPECIAL DOCUMENT PAPER, INK SCREENS, WATERMARK, BACKGROUND DESIGNS, HOLOGRAM AND OTHER SECURITY FEATURES NOT LISTED AND DO EXCEED DOCUMENT SECURITY INDUSTRY GUIDELINES

**www.igi.org**