



**ELECTRONIC COPY**

LG733583859  
Report verification at igi.org



September 17, 2025

IGI Report Number **LG733583859**

Description **LABORATORY GROWN DIAMOND**

Shape and Cutting Style **ROUND BRILLIANT**

Measurements **6.99 - 7.03 X 4.26 MM**

**GRADING RESULTS**

Carat Weight **1.27 CARAT**

Color Grade **E**

Clarity Grade **VS 1**

Cut Grade **IDEAL**

September 17, 2025

IGI Report Number **LG733583859**

Description **LABORATORY GROWN DIAMOND**

Shape and Cutting Style **ROUND BRILLIANT**

Measurements **6.99 - 7.03 X 4.26 MM**

**GRADING RESULTS**

Carat Weight **1.27 CARAT**

Color Grade **E**

Clarity Grade **VS 1**

Cut Grade **IDEAL**

**ADDITIONAL GRADING INFORMATION**

Polish **EXCELLENT**

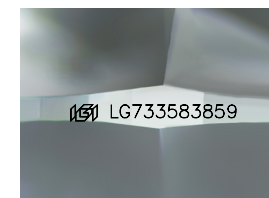
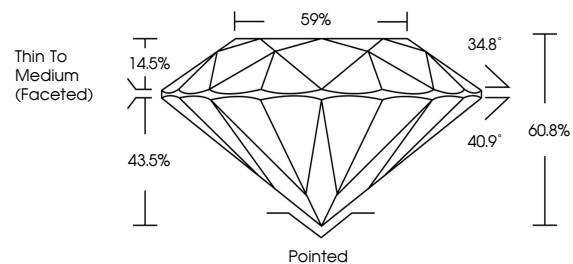
Symmetry **EXCELLENT**

Fluorescence **NONE**

Inscription(s) **LG733583859**

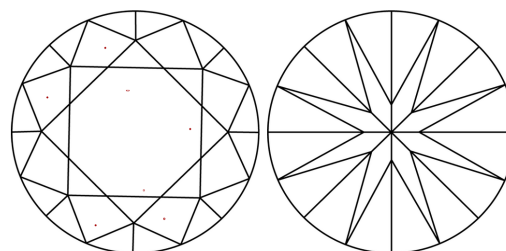
Comments: HEARTS & ARROWS  
This Laboratory Grown Diamond was created by  
Chemical Vapor Deposition (CVD) growth process.  
Type IIa

**PROPORTIONS**



Sample Image Used

**CLARITY CHARACTERISTICS**



**KEY TO SYMBOLS**

Red symbols indicate internal characteristics.  
Green symbols indicate external characteristics.



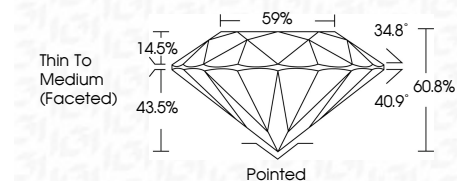
**COLOR**

D E F G H I J Faint Very Light Light

**CLARITY**

IF VS<sup>1-2</sup> VS<sup>1-2</sup> SI<sup>1-2</sup> I<sup>1-3</sup>

Internally Flawless Very Very Slightly Included Very Slightly Included Slightly Included Included



**ADDITIONAL GRADING INFORMATION**

Polish **EXCELLENT**

Symmetry **EXCELLENT**

Fluorescence **NONE**

Inscription(s) **LG733583859**

Comments: HEARTS & ARROWS  
This Laboratory Grown Diamond was created by  
Chemical Vapor Deposition (CVD) growth process.  
Type IIa



**IGI**



September 17, 2025  
IGI Report No LG733583859  
ROUND BRILLIANT

1.27 CARAT  
E

6.99 - 7.03 X 4.26 MM  
60.8%  
59%  
Thin To Medium (Faceted)

Culet  
Polish  
Symmetry  
Fluorescence  
Inscriptions(s)

Pointed  
EXCELLENT  
EXCELLENT  
NONE  
NONE  
IGI LG733583859

Comments:  
Hearts & Arrows  
This Laboratory Grown Diamond was  
created by Chemical Vapor Deposition  
(CVD) growth process.  
Type IIa