



ELECTRONIC COPY

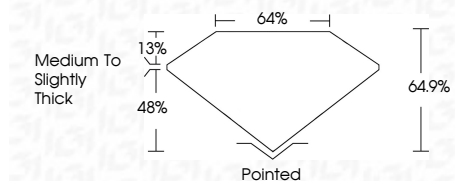
LG733583280
Report verification at igi.org



September 23, 2025
IGI Report Number **LG733583280**
Description **LABORATORY GROWN DIAMOND**
Shape and Cutting Style **CUT CORNERED RECTANGULAR MODIFIED BRILLIANT**
Measurements **9.85 X 6.76 X 4.39 MM**

GRADING RESULTS

Carat Weight **2.62 CARATS**
Color Grade **FANCY VIVID PINK**
Clarity Grade **VS 1**



ADDITIONAL GRADING INFORMATION

Polish **EXCELLENT**
Symmetry **EXCELLENT**
Fluorescence **STRONG**

Inscription(s) **IGI LG733583280**

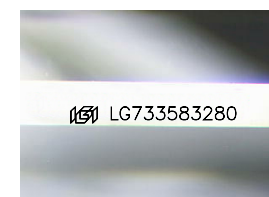
Comments: This Laboratory Grown Diamond was created by Chemical Vapor Deposition (CVD) growth process. Indications of post-growth treatment.



IGI

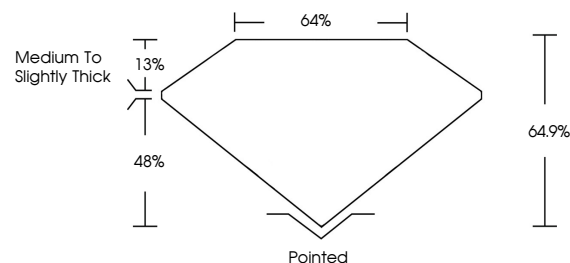
September 23, 2025
IGI Report No **LG733583280**
CUT CORNERED RECT. MODIFIED BRILLIANT
9.85 X 6.76 X 4.39 MM
Carat Weight **2.62 CARATS**
Color Grade **FANCY VIVID PINK**
Clarity Grade **VS 1**
Depth **48%**
Table **13%**
Girdle **Medium to Slightly Thick**
Culet **Pointed**
Polish **EXCELLENT**
Symmetry **EXCELLENT**
Fluorescence **STRONG**
Inscription(s) **IGI LG733583280**

Comments: This Laboratory Grown Diamond was created by Chemical Vapor Deposition (CVD) growth process. Indications of post-growth treatment.

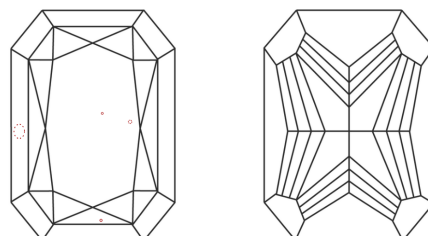


Sample Image Used

PROPORTIONS



CLARITY CHARACTERISTICS



KEY TO SYMBOLS

Red symbols indicate internal characteristics.
Green symbols indicate external characteristics.

COLOR

D E F G H I J Faint Very Light Light

CLARITY

IF WS¹⁻² VS¹⁻² SI¹⁻² I¹⁻³

Internally Flawless Very Very Slightly Included Very Slightly Included Slightly Included Included

