



# INTERNATIONAL GEMOLOGICAL INSTITUTE

ELECTRONIC COPY

## LABORATORY GROWN DIAMOND REPORT

September 26, 2025  
IGI Report Number **LG733582780**  
Description **LABORATORY GROWN DIAMOND**  
Shape and Cutting Style **ROUND BRILLIANT**  
Measurements **5.14 - 5.17 X 3.22 MM**

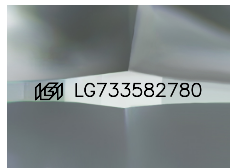
### GRADING RESULTS

Carat Weight **0.53 CARAT**  
Color Grade **FANCY VIVID GREEN**  
Clarity Grade **VS 1**  
Cut Grade **IDEAL**

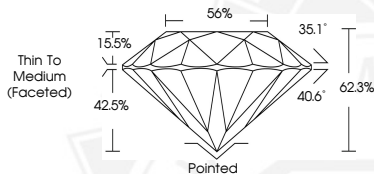
### ADDITIONAL GRADING INFORMATION

Polish **VERY GOOD**  
Symmetry **VERY GOOD**  
Fluorescence **NONE**  
Inscription(s) **IGI LG733582780**

Comments: This Laboratory Grown Diamond was created by Chemical Vapor Deposition (CVD) growth process.  
Indications of post-growth treatment.



Sample Image Used



September 26, 2025  
IGI Report Number **LG733582780**  
**ROUND BRILLIANT**  
**LABORATORY GROWN DIAMOND**  
**5.14 - 5.17 X 3.22 MM**  
Carat Weight **0.53 CARAT**  
Color Grade **FANCY VIVID GREEN**  
Clarity Grade **VS 1**  
Cut Grade **IDEAL**  
Polish **VERY GOOD**  
Symmetry **VERY GOOD**  
Fluorescence **NONE**  
Inscription(s) **IGI LG733582780**  
Comments: This Laboratory Grown Diamond was created by Chemical Vapor Deposition (CVD) growth process. Indications of post-growth treatment.



September 26, 2025  
IGI Report Number **LG733582780**  
**ROUND BRILLIANT**  
**LABORATORY GROWN DIAMOND**  
**5.14 - 5.17 X 3.22 MM**  
Carat Weight **0.53 CARAT**  
Color Grade **FANCY VIVID GREEN**  
Clarity Grade **VS 1**  
Cut Grade **IDEAL**  
Polish **VERY GOOD**  
Symmetry **VERY GOOD**  
Fluorescence **NONE**  
Inscription(s) **IGI LG733582780**  
Comments: This Laboratory Grown Diamond was created by Chemical Vapor Deposition (CVD) growth process. Indications of post-growth treatment.



THIS DOCUMENT WAS PRODUCED WITH THE FOLLOWING SECURITY MEASURES: SPECIAL DOCUMENT PAPER, INK SCREENS, WATERMARK, BACKGROUND DESIGNS, HOLOGRAM AND OTHER SECURITY FEATURES NOT LISTED AND DO EXCEED DOCUMENT SECURITY INDUSTRY GUIDELINES.

For terms & conditions and to verify this report, please visit [www.igi.org](http://www.igi.org)