



ELECTRONIC COPY

LG733576998
Report verification at igi.org



September 19, 2025
IGI Report Number **LG733576998**
Description **LABORATORY GROWN DIAMOND**
Shape and Cutting Style **CUT CORNERED SQUARE
MODIFIED BRILLIANT**
Measurements **8.15 X 7.84 X 4.86 MM**
GRADING RESULTS
Carat Weight **2.82 CARATS**
Color Grade **FANCY BROWN PINK**
Clarity Grade **VS 1**

LABORATORY GROWN DIAMOND REPORT

September 19, 2025
IGI Report Number **LG733576998**
Description **LABORATORY GROWN DIAMOND**
Shape and Cutting Style **CUT CORNERED SQUARE
MODIFIED BRILLIANT**
Measurements **8.15 X 7.84 X 4.86 MM**

GRADING RESULTS

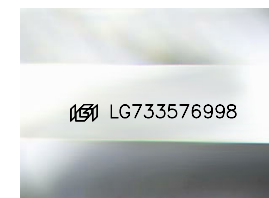
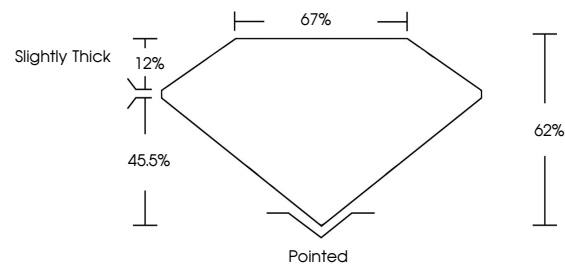
Carat Weight **2.82 CARATS**
Color Grade **FANCY BROWN PINK**
Clarity Grade **VS 1**

ADDITIONAL GRADING INFORMATION

Polish **EXCELLENT**
Symmetry **EXCELLENT**
Fluorescence **SLIGHT**
Inscription(s) **IGI LG733576998**

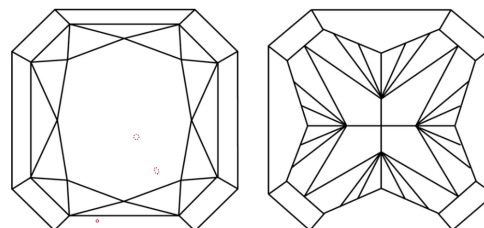
Comments: This Laboratory Grown Diamond was created by Chemical Vapor Deposition (CVD) growth process. Indications of post-growth treatment.

PROPORTIONS



Sample Image Used

CLARITY CHARACTERISTICS



KEY TO SYMBOLS

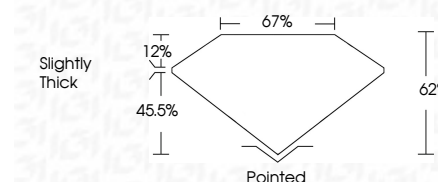
Red symbols indicate internal characteristics.
Green symbols indicate external characteristics.

COLOR

D E F G H I J Faint Very Light Light

CLARITY

IF	VS ¹⁻²	VS ¹⁻²	SI ¹⁻²	I ¹⁻³
Internally Flawless	Very Very Slightly Included	Very Slightly Included	Slightly Included	Included



ADDITIONAL GRADING INFORMATION

Polish **EXCELLENT**
Symmetry **EXCELLENT**
Fluorescence **SLIGHT**
Inscription(s) **IGI LG733576998**
Comments: This Laboratory Grown Diamond was created by Chemical Vapor Deposition (CVD) growth process. Indications of post-growth treatment.



September 19, 2025
IGI Report No LG733576998
CUT CORNERED SQUARE MODIFIED BRILLIANT
8.15 X 7.84 X 4.86 MM
Carat Weight **2.82 CARATS**
Color Grade **FANCY BROWN PINK**
Clarity Grade **VS 1**
Depth **62%**
Table **67%**
Girdle **Slightly Thick**
Culet **Pointed**
Polish **EXCELLENT**
Symmetry **EXCELLENT**
Fluorescence **SLIGHT**
Inscription(s) **IGI LG733576998**
Comments: This Laboratory Grown Diamond was created by Chemical Vapor Deposition (CVD) growth process. Indications of post-growth treatment.