



ELECTRONIC COPY

LG733575995
Report verification at igi.org



September 22, 2025

IGI Report Number **LG733575995**

Description **LABORATORY GROWN DIAMOND**

Shape and Cutting Style **CUT CORNERED
RECTANGULAR MODIFIED
BRILLIANT**

Measurements **12.17 X 8.44 X 5.32 MM**

GRADING RESULTS

Carat Weight **5.05 CARATS**

Color Grade **FANCY VIVID PINK**

Clarity Grade **VS 1**

LABORATORY GROWN DIAMOND REPORT

September 22, 2025

IGI Report Number **LG733575995**

Description **LABORATORY GROWN DIAMOND**

Shape and Cutting Style **CUT CORNERED RECTANGULAR
MODIFIED BRILLIANT**

Measurements **12.17 X 8.44 X 5.32 MM**

GRADING RESULTS

Carat Weight **5.05 CARATS**

Color Grade **FANCY VIVID PINK**

Clarity Grade **VS 1**

ADDITIONAL GRADING INFORMATION

Polish **EXCELLENT**

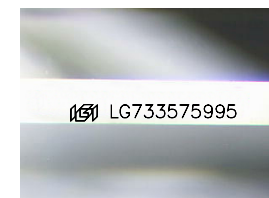
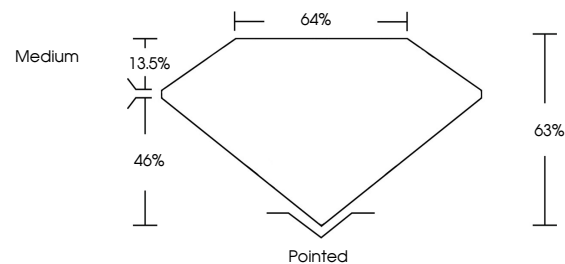
Symmetry **EXCELLENT**

Fluorescence **STRONG**

Inscription(s) **IGI LG733575995**

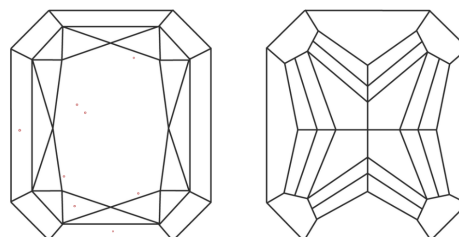
Comments: This Laboratory Grown Diamond was created by Chemical Vapor Deposition (CVD) growth process. Indications of post-growth treatment.

PROPORTIONS



Sample Image Used

CLARITY CHARACTERISTICS



KEY TO SYMBOLS

Red symbols indicate internal characteristics.
Green symbols indicate external characteristics.

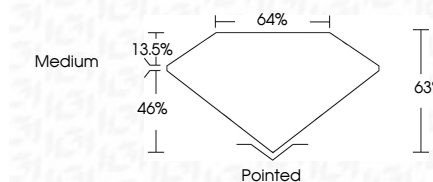
COLOR

D E F G H I J Faint Very Light Light

CLARITY

IF WS¹⁻² VS¹⁻² SI¹⁻² I¹⁻³

Internally Flawless Very Very Slightly Included Very Slightly Included Slightly Included Included



ADDITIONAL GRADING INFORMATION

Polish **EXCELLENT**

Symmetry **EXCELLENT**

Fluorescence **STRONG**

Inscription(s) **IGI LG733575995**

Comments: This Laboratory Grown Diamond was created by Chemical Vapor Deposition (CVD) growth process. Indications of post-growth treatment.



IGI



September 22, 2025
IGI Report No. LG733575995
CUT CORNERED RECT. MODIFIED BRILLIANT

12.17 X 8.44 X 5.32 MM

5.05 CARATS
FANCY VIVID PINK

VS 1
63%
46%
13.5%
Medium

Pointed
EXCELLENT
EXCELLENT
STRONG
IGI LG733575995

Comments: This Laboratory Grown Diamond was created by Chemical Vapor Deposition (CVD) growth process. Indications of post-growth treatment.