



ELECTRONIC COPY

LG733575751
Report verification at igi.org



September 14, 2025

IGI Report Number **LG733575751**

Description **LABORATORY GROWN DIAMOND**

Shape and Cutting Style **ROUND BRILLIANT**

Measurements **8.74 - 8.76 X 5.39 MM**

GRADING RESULTS

Carat Weight **2.54 CARATS**

Color Grade **D**

Clarity Grade **VS 2**

Cut Grade **IDEAL**

September 14, 2025
IGI Report Number **LG733575751**
Description **LABORATORY GROWN DIAMOND**
Shape and Cutting Style **ROUND BRILLIANT**
Measurements **8.74 - 8.76 X 5.39 MM**

GRADING RESULTS

Carat Weight **2.54 CARATS**

Color Grade **D**

Clarity Grade **VS 2**

Cut Grade **IDEAL**

ADDITIONAL GRADING INFORMATION

Polish **EXCELLENT**

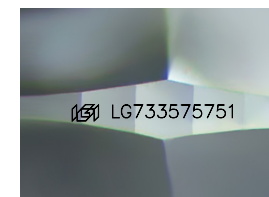
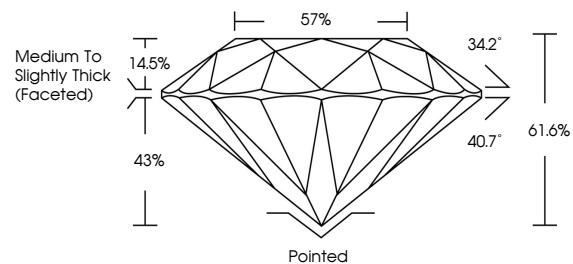
Symmetry **EXCELLENT**

Fluorescence **NONE**

Inscription(s) **IGI LG733575751**

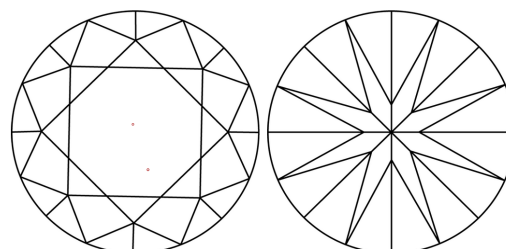
Comments: This Laboratory Grown Diamond was created by Chemical Vapor Deposition (CVD) growth process. Type IIa

PROPORTIONS



Sample Image Used

CLARITY CHARACTERISTICS



KEY TO SYMBOLS

Red symbols indicate internal characteristics.
Green symbols indicate external characteristics.

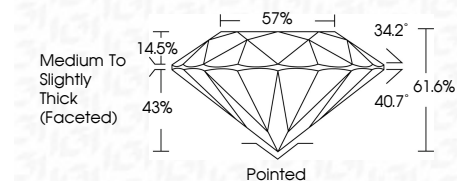
COLOR

D E F G H I J Faint Very Light Light

CLARITY

IF WS¹⁻² VS¹⁻² SI¹⁻² I¹⁻³

Internally Flawless Very Very Slightly Included Very Slightly Included Slightly Included Included



ADDITIONAL GRADING INFORMATION

Polish **EXCELLENT**

Symmetry **EXCELLENT**

Fluorescence **NONE**

Inscription(s) **IGI LG733575751**

Comments: This Laboratory Grown Diamond was created by Chemical Vapor Deposition (CVD) growth process. Type IIa



IGI



September 14, 2025	IGI Report No LG733575751	2.54 CARATS	D	VS 2	IDEAL	61.6%	57%	Medium To Slightly Thick (Faceted)	Pointed	EXCELLENT	EXCELLENT	NONE	IGI LG733575751
ROUND BRILLIANT	8.74 - 8.76 X 5.39 MM	Carat Weight	Color Grade	Clarity Grade	Cut Grade	Depth	Table	Girdle	Culet	Polish	Symmetry	Fluorescence	Inscription(s)

Comments: This Laboratory Grown Diamond was created by Chemical Vapor Deposition (CVD) growth process. Type IIa