



LABORATORY GROWN DIAMOND REPORT

September 16, 2025
 IGI Report Number **LG733575006**
 Description **LABORATORY GROWN DIAMOND**
 Shape and Cutting Style **HEART BRILLIANT**
 Measurements **5.88 X 6.53 X 3.75 MM**

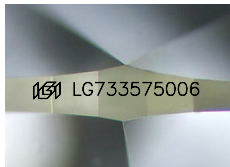
GRADING RESULTS

Carat Weight **0.82 CARAT**
 Color Grade **E**
 Clarity Grade **VVS 1**

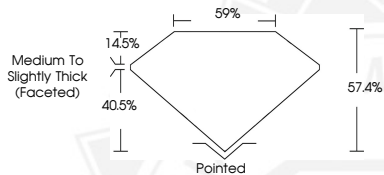
ADDITIONAL GRADING INFORMATION

Polish **EXCELLENT**
 Symmetry **EXCELLENT**
 Fluorescence **NONE**
 Inscription(s) **IGI LG733575006**

Comments: As Grown - No indication of post-growth treatment.
 This Laboratory Grown Diamond was created by High Pressure High Temperature (HPHT) growth process.
 Type II



Sample Image Used



September 16, 2025
 IGI Report Number **LG733575006**
HEART BRILLIANT
LABORATORY GROWN DIAMOND
5.88 X 6.53 X 3.75 MM
 Carat Weight **0.82 CARAT**
 Color Grade **E**
 Clarity Grade **VVS 1**
 Polish **EXCELLENT**
 Symmetry **EXCELLENT**
 Fluorescence **NONE**
 Inscription(s) **IGI LG733575006**

Comments: As Grown - No indication of post-growth treatment. This Laboratory Grown Diamond was created by High Pressure High Temperature (HPHT) growth process. Type II



September 16, 2025
 IGI Report Number **LG733575006**
HEART BRILLIANT
LABORATORY GROWN DIAMOND
5.88 X 6.53 X 3.75 MM
 Carat Weight **0.82 CARAT**
 Color Grade **E**
 Clarity Grade **VVS 1**
 Polish **EXCELLENT**
 Symmetry **EXCELLENT**
 Fluorescence **NONE**
 Inscription(s) **IGI LG733575006**

Comments: As Grown - No indication of post-growth treatment. This Laboratory Grown Diamond was created by High Pressure High Temperature (HPHT) growth process. Type II



THIS DOCUMENT WAS PRODUCED WITH THE FOLLOWING SECURITY MEASURES: SPECIAL DOCUMENT PAPER, INK SCREENS, WATERMARK, BACKGROUND DESIGNS, HOLOGRAM AND OTHER SECURITY FEATURES NOT LISTED AND DO EXCEED DOCUMENT SECURITY INDUSTRY GUIDELINES.