



INTERNATIONAL GEMOLOGICAL INSTITUTE

ELECTRONIC COPY

LABORATORY GROWN DIAMOND REPORT

September 13, 2025
IGI Report Number **LG733573206**
Description **LABORATORY GROWN DIAMOND**
Shape and Cutting Style **PRINCESS CUT**
Measurements **4.93 X 4.85 X 3.48 MM**

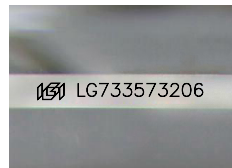
GRADING RESULTS

Carat Weight **0.74 CARAT**
Color Grade **E**
Clarity Grade **VVS 1**

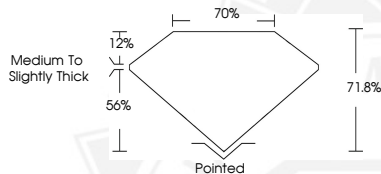
ADDITIONAL GRADING INFORMATION

Polish **VERY GOOD**
Symmetry **EXCELLENT**
Fluorescence **NONE**
Inscription(s) **IGI LG733573206**

Comments: This Laboratory Grown Diamond was created by Chemical Vapor Deposition (CVD) growth process.
Type IIa



Sample Image Used



September 13, 2025
IGI Report Number **LG733573206**
PRINCESS CUT
LABORATORY GROWN DIAMOND
4.93 X 4.85 X 3.48 MM
Carat Weight **0.74 CARAT**
Color Grade **E**
Clarity Grade **VVS 1**
Polish **VERY GOOD**
Symmetry **EXCELLENT**
Fluorescence **NONE**
Inscription(s) **IGI LG733573206**

Comments: This Laboratory Grown Diamond was created by Chemical Vapor Deposition (CVD) growth process. Type IIa



September 13, 2025
IGI Report Number **LG733573206**
PRINCESS CUT
LABORATORY GROWN DIAMOND
4.93 X 4.85 X 3.48 MM
Carat Weight **0.74 CARAT**
Color Grade **E**
Clarity Grade **VVS 1**
Polish **VERY GOOD**
Symmetry **EXCELLENT**
Fluorescence **NONE**
Inscription(s) **IGI LG733573206**

Comments: This Laboratory Grown Diamond was created by Chemical Vapor Deposition (CVD) growth process. Type IIa



THIS DOCUMENT WAS PRODUCED WITH THE FOLLOWING SECURITY MEASURES: SPECIAL DOCUMENT PAPER, INK SCREENS, WATERMARK, BACKGROUND DESIGNS, HOLOGRAM AND OTHER SECURITY FEATURES NOT LISTED AND DO EXCEED DOCUMENT SECURITY INDUSTRY GUIDELINES.

For terms & conditions and to verify this report, please visit www.igi.org