



ELECTRONIC COPY

LG733572854
Report verification at igi.org



September 15, 2025
IGI Report Number **LG733572854**
Description **LABORATORY GROWN DIAMOND**
Shape and Cutting Style **SQUARE CUSHION MODIFIED BRILLIANT**
Measurements **8.22 X 8.15 X 5.26 MM**
GRADING RESULTS
Carat Weight **3.04 CARATS**
Color Grade **D**
Clarity Grade **VVS 1**

September 15, 2025
IGI Report Number **LG733572854**
Description **LABORATORY GROWN DIAMOND**
Shape and Cutting Style **SQUARE CUSHION MODIFIED BRILLIANT**
Measurements **8.22 X 8.15 X 5.26 MM**

GRADING RESULTS

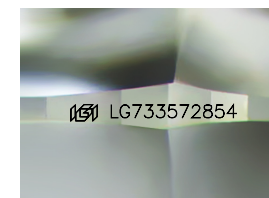
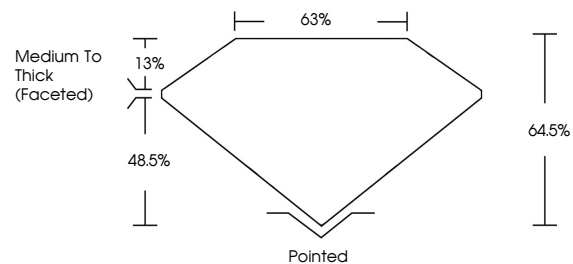
Carat Weight **3.04 CARATS**
Color Grade **D**
Clarity Grade **VVS 1**

ADDITIONAL GRADING INFORMATION

Polish **EXCELLENT**
Symmetry **EXCELLENT**
Fluorescence **NONE**
Inscription(s) **IGI LG733572854**

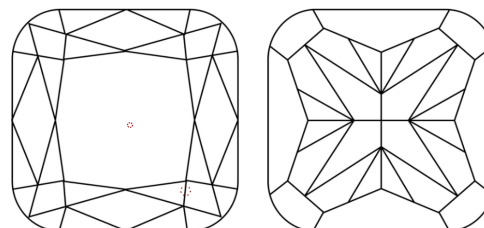
Comments: As Grown - No indication of post-growth treatment.
This Laboratory Grown Diamond was created by High Pressure High Temperature (HPHT) growth process. Type II

PROPORTIONS



Sample Image Used

CLARITY CHARACTERISTICS



KEY TO SYMBOLS

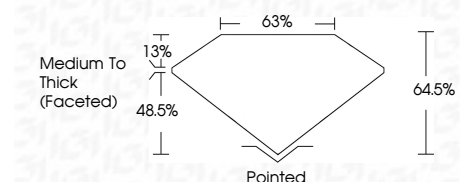
Red symbols indicate internal characteristics.
Green symbols indicate external characteristics.

COLOR

D E F G H I J Faint Very Light Light

CLARITY

IF	VS ¹⁻²	VS ¹⁻²	SI ¹⁻²	I ¹⁻³
Internally Flawless	Very Very Slightly Included	Very Slightly Included	Slightly Included	Included



ADDITIONAL GRADING INFORMATION

Polish **EXCELLENT**
Symmetry **EXCELLENT**
Fluorescence **NONE**
Inscription(s) **IGI LG733572854**
Comments: As Grown - No indication of post-growth treatment.
This Laboratory Grown Diamond was created by High Pressure High Temperature (HPHT) growth process. Type II



IGI



September 15, 2025
IGI Report No LG733572854
SQUARE CUSHION MODIFIED BRILLIANT
8.22 X 8.15 X 5.26 MM
3.04 CARATS
D
3.04 CARATS
VVS 1
64.5%
63%
Medium To Thick (Faceted)
Pointed
EXCELLENT
EXCELLENT
NONE
IGI LG733572854

Comments: As Grown - No indication of post-growth treatment.
This Laboratory Grown Diamond was created by High Pressure High Temperature (HPHT) growth process. Type II