



ELECTRONIC COPY

LABORATORY GROWN DIAMOND REPORT

September 26, 2025
IGI Report Number LG733569971
Description LABORATORY GROWN DIAMOND
Shape and Cutting Style EMERALD CUT
Measurements 14.69 X 9.90 X 6.80 MM

GRADING RESULTS

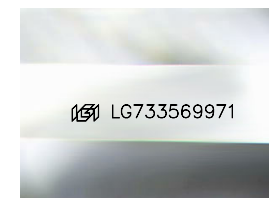
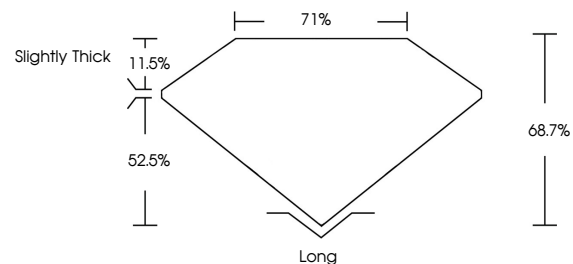
Carat Weight 9.81 CARATS
Color Grade F
Clarity Grade VS 1

ADDITIONAL GRADING INFORMATION

Polish EXCELLENT
Symmetry EXCELLENT
Fluorescence NONE
Inscription(s) IGI LG733569971

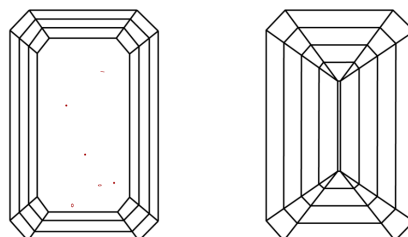
Comments: This Laboratory Grown Diamond was created by Chemical Vapor Deposition (CVD) growth process. Type IIa

PROPORTIONS



Sample Image Used

CLARITY CHARACTERISTICS



KEY TO SYMBOLS

Red symbols indicate internal characteristics.
Green symbols indicate external characteristics.

COLOR

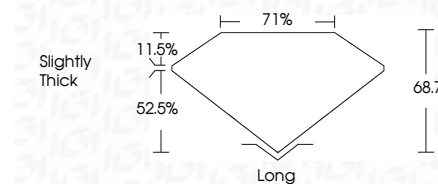
D E F G H I J Faint Very Light Light

CLARITY

IF WS¹⁻² VS¹⁻² SI¹⁻² I¹⁻³
Internally Flawless Very Very Slightly Included Very Slightly Included Slightly Included Included



September 26, 2025
IGI Report Number LG733569971
Description LABORATORY GROWN DIAMOND
Shape and Cutting Style EMERALD CUT
Measurements 14.69 X 9.90 X 6.80 MM
GRADING RESULTS
Carat Weight 9.81 CARATS
Color Grade F
Clarity Grade VS 1



ADDITIONAL GRADING INFORMATION

Polish EXCELLENT
Symmetry EXCELLENT
Fluorescence NONE
Inscription(s) IGI LG733569971
Comments: This Laboratory Grown Diamond was created by Chemical Vapor Deposition (CVD) growth process. Type IIa



IGI



September 26, 2025
IGI Report No LG733569971
EMERALD CUT
14.69 X 9.90 X 6.80 MM
9.81 CARATS
Color Grade F
Clarity Grade VS 1
Depth 68.7%
Table 71%
Girdle Slightly Thick
Culet Long
Polish EXCELLENT
Symmetry EXCELLENT
Fluorescence NONE
Inscription(s) IGI LG733569971
Comments: This Laboratory Grown Diamond was created by Chemical Vapor Deposition (CVD) growth process. Type IIa