



ELECTRONIC COPY

LG733564181
Report verification at igi.org



September 22, 2025
IGI Report Number **LG733564181**
Description **LABORATORY GROWN DIAMOND**
Shape and Cutting Style **SQUARE CUSHION MODIFIED BRILLIANT**
Measurements **13.69 X 13.01 X 8.91 MM**
GRADING RESULTS
Carat Weight **15.14 CARATS**
Color Grade **FANCY VIVID PINK**
Clarity Grade **VS 2**

September 22, 2025
IGI Report Number **LG733564181**
Description **LABORATORY GROWN DIAMOND**
Shape and Cutting Style **SQUARE CUSHION MODIFIED BRILLIANT**
Measurements **13.69 X 13.01 X 8.91 MM**

GRADING RESULTS

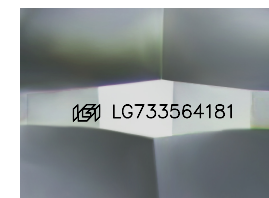
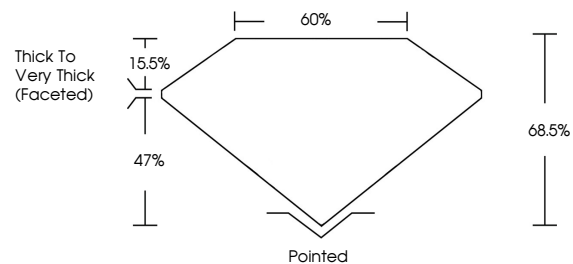
Carat Weight **15.14 CARATS**
Color Grade **FANCY VIVID PINK**
Clarity Grade **VS 2**

ADDITIONAL GRADING INFORMATION

Polish **EXCELLENT**
Symmetry **EXCELLENT**
Fluorescence **STRONG**
Inscription(s) **IGI LG733564181**

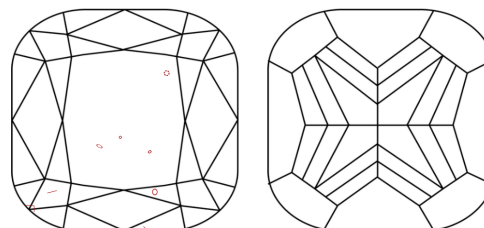
Comments: This Laboratory Grown Diamond was created by Chemical Vapor Deposition (CVD) growth process.
Indications of post-growth treatment.

PROPORTIONS



Sample Image Used

CLARITY CHARACTERISTICS



KEY TO SYMBOLS

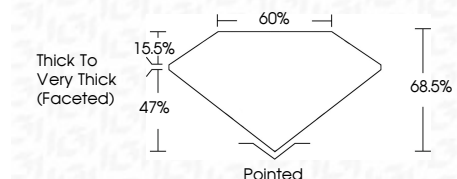
Red symbols indicate internal characteristics.
Green symbols indicate external characteristics.

COLOR

D E F G H I J Faint Very Light Light

CLARITY

IF	VS ¹⁻²	VS ¹⁻²	SI ¹⁻²	I ¹⁻³
Internally Flawless	Very Very Slightly Included	Very Slightly Included	Slightly Included	Included



ADDITIONAL GRADING INFORMATION

Polish **EXCELLENT**
Symmetry **EXCELLENT**
Fluorescence **STRONG**
Inscription(s) **IGI LG733564181**
Comments: This Laboratory Grown Diamond was created by Chemical Vapor Deposition (CVD) growth process.
Indications of post-growth treatment.



IGI



September 22, 2025
IGI Report No LG733564181
SQUARE CUSHION MODIFIED BRILLIANT
13.69 X 13.01 X 8.91 MM
15.14 CARATS
FANCY VIVID PINK
VS 2
68.5%
47%
15.5%
Thick To Very Thick (Faceted)
Pointed
EXCELLENT
EXCELLENT
STRONG
IGI LG733564181
Comments: This Laboratory Grown Diamond was created by Chemical Vapor Deposition (CVD) growth process.
Indications of post-growth treatment.