



**ELECTRONIC COPY**

LG733562380  
Report verification at igi.org



September 12, 2025

IGI Report Number **LG733562380**

Description **LABORATORY GROWN DIAMOND**

Shape and Cutting Style **EMERALD CUT**

Measurements **16.52 X 10.92 X 7.00 MM**

**GRADING RESULTS**

Carat Weight **13.00 CARATS**

Color Grade **F**

Clarity Grade **VS 1**

September 12, 2025  
IGI Report Number **LG733562380**  
Description **LABORATORY GROWN DIAMOND**  
Shape and Cutting Style **EMERALD CUT**  
Measurements **16.52 X 10.92 X 7.00 MM**

**GRADING RESULTS**

Carat Weight **13.00 CARATS**

Color Grade **F**

Clarity Grade **VS 1**

**ADDITIONAL GRADING INFORMATION**

Polish **EXCELLENT**

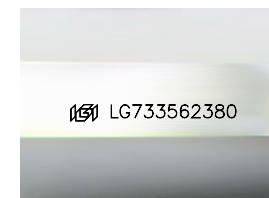
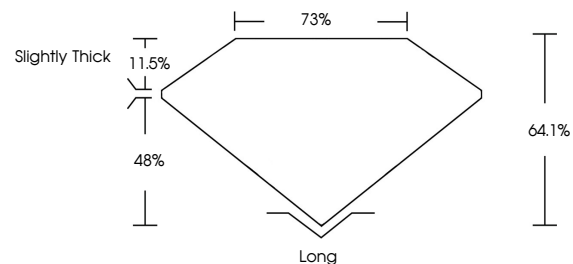
Symmetry **EXCELLENT**

Fluorescence **NONE**

Inscription(s) **LG733562380**

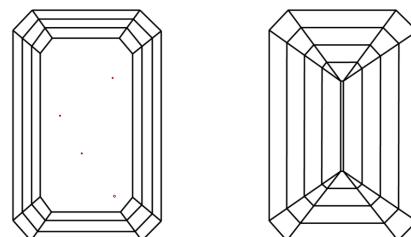
Comments: This Laboratory Grown Diamond was created by Chemical Vapor Deposition (CVD) growth process.  
Type IIa

**PROPORTIONS**



Sample Image Used

**CLARITY CHARACTERISTICS**



**KEY TO SYMBOLS**

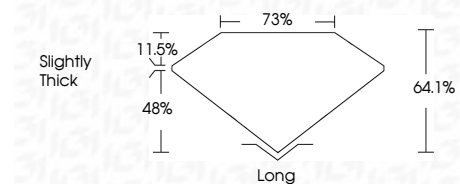
Red symbols indicate internal characteristics.  
Green symbols indicate external characteristics.

**COLOR**

D E F G H I J Faint Very Light Light

**CLARITY**

IF	VS <sup>1-2</sup>	VS <sup>1-2</sup>	SI <sup>1-2</sup>	I <sup>1-3</sup>
Internally Flawless	Very Very Slightly Included	Very Slightly Included	Slightly Included	Included



**ADDITIONAL GRADING INFORMATION**

Polish **EXCELLENT**

Symmetry **EXCELLENT**

Fluorescence **NONE**

Inscription(s) **LG733562380**

Comments: This Laboratory Grown Diamond was created by Chemical Vapor Deposition (CVD) growth process.  
Type IIa



**IGI**



September 12, 2025  
IGI Report No LG733562380  
**EMERALD CUT**

**13.00 CARATS**  
F

16.52 X 10.92 X 7.00 MM

Carat Weight  
Color Grade  
Clarity Grade  
Table  
Girdle  
Slightly Thick

Depth  
Pavilion  
Culet

VS 1  
64.1%  
75%

Long  
EXCELLENT  
EXCELLENT  
NONE  
NONE

Inscription(s)  
 LG733562380

Comments: This Laboratory Grown Diamond was created by Chemical Vapor Deposition (CVD) growth process.  
Type IIa