

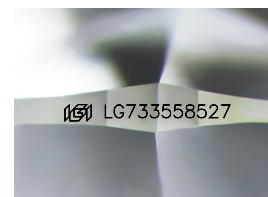
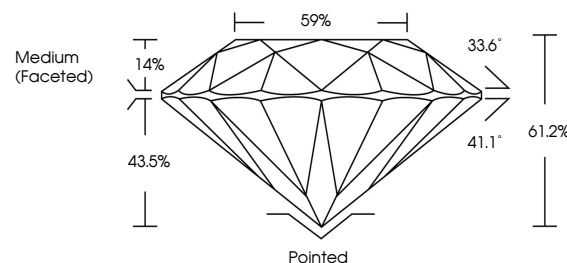


ELECTRONIC COPY

LABORATORY GROWN DIAMOND REPORT

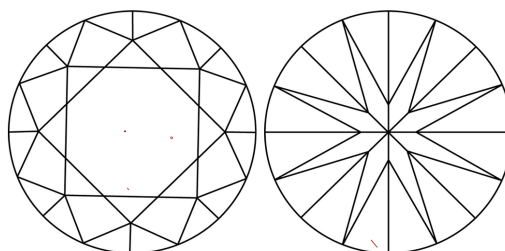
LG733558527
Report verification at lgi.org

PROPORTIONS



Sample Image Used

CLARITY CHARACTERISTICS



KEY TO SYMBOLS

Red symbols indicate internal characteristics.
Green symbols indicate external characteristics.

COLOR

D E F G H I J Faint Very Light Light

CLARITY

IF WS¹⁻² VS¹⁻² SI¹⁻² |¹⁻³

Internally Flawless	Very Very Slightly Included	Very Slightly Included	Slightly Included	Included
------------------------	--------------------------------	---------------------------	----------------------	----------

LABORATORY GROWN DIAMOND REPORT



September 12, 2025

IGI Report Number **LG733558527**Description **LABORATORY GROWN DIAMOND**Shape and Cutting Style **ROUND BRILLIANT**

Measurements 8.08 - 8.15 X 4.96 MM

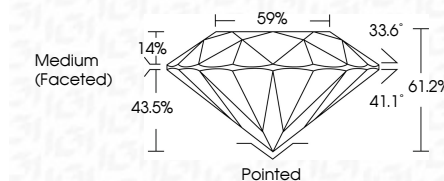
GRADING RESULTS

Carat Weight **2.01 CARATS**

Color Grade

Clarity Grade VS 1

Cut Grade **IDEAL**



ADDITIONAL GRADING INFORMATION

Polish **EXCELLENT**Symmetry **EXCELLENT**Fluorescence **NONE**Inscription(s) LG733558527

Comments: This Laboratory Grown Diamond was created by Chemical Vapor Deposition (CVD) growth process.

Type IIa



September 12, 2005	Color Weight	2.01 CARATS		Pointed
GI Report No. LG73365827	Color Grade	E	VS 1	EXCELLENT
ROUND BRILLIANT	Clarity Grade		IDEAL	EXCELLENT
0.00 - 0.15 X 4.9% MM	Cut Grade		61.2%	
	Depth		59%	NONE
	Table		Medium (Faced)	lgil LG73365827
	Girdle			
	Culet			
	Polish			
	Symmetry			
	Fluorescence			
	Inscription(s)			
	Comments:			
	This Laboratory Grown Diamond was created by Chemical Vapor Deposition (CVD) growth process.			
	Type IIA			

