



ELECTRONIC COPY

LABORATORY GROWN DIAMOND REPORT

September 11, 2025
 IGI Report Number **LG733556420**
 Description **LABORATORY GROWN DIAMOND**
 Shape and Cutting Style **CUT CORNERED RECTANGULAR
MODIFIED BRILLIANT**
 Measurements **10.93 X 7.69 X 5.20 MM**

GRADING RESULTS

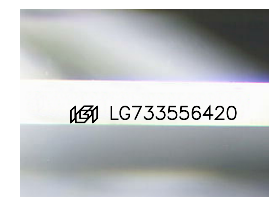
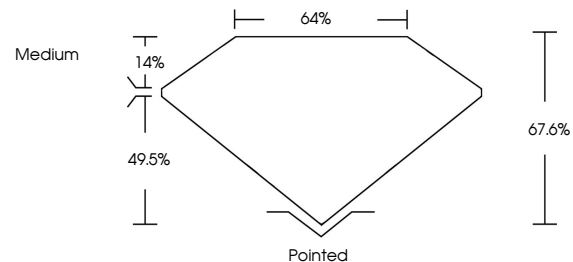
Carat Weight **3.73 CARATS**
 Color Grade **D**
 Clarity Grade **VS 1**

ADDITIONAL GRADING INFORMATION

Polish **EXCELLENT**
 Symmetry **EXCELLENT**
 Fluorescence **NONE**
 Inscription(s) **IGI LG733556420**

Comments: As Grown - No indication of post-growth treatment.
 This Laboratory Grown Diamond was created by High Pressure High Temperature (HPHT) growth process. Type II

PROPORTIONS



Sample Image Used

COLOR

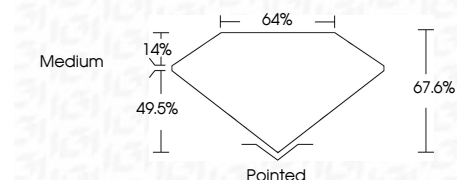
D E F G H I J Faint Very Light Light

CLARITY

IF	VS ¹⁻²	VS ¹⁻²	SI ¹⁻²	I ¹⁻³
Internally Flawless	Very Very Slightly Included	Very Slightly Included	Slightly Included	Included



September 11, 2025
 IGI Report Number **LG733556420**
 Description **LABORATORY GROWN DIAMOND**
 Shape and Cutting Style **CUT CORNERED
RECTANGULAR MODIFIED
BRILLIANT**
 Measurements **10.93 X 7.69 X 5.20 MM**
GRADING RESULTS
 Carat Weight **3.73 CARATS**
 Color Grade **D**
 Clarity Grade **VS 1**



ADDITIONAL GRADING INFORMATION

Polish **EXCELLENT**
 Symmetry **EXCELLENT**
 Fluorescence **NONE**
 Inscription(s) **IGI LG733556420**
 Comments: As Grown - No indication of post-growth treatment.
 This Laboratory Grown Diamond was created by High Pressure High Temperature (HPHT) growth process. Type II



September 11, 2025
 IGI Report No LG733556420
CUT CORNERED RECT. MODIFIED BRILLIANT
10.93 X 7.69 X 5.20 MM
 Carat Weight **3.73 CARATS**
 Color Grade **D**
 Clarity Grade **VS 1**
 Table **64%**
 Girdle **Medium**
 Culet **Pointed**
 Polish **EXCELLENT**
 Symmetry **EXCELLENT**
 Fluorescence **NONE**
 Inscription(s) **IGI LG733556420**
 Comments: As Grown - No indication of post-growth treatment.
 This Laboratory Grown Diamond was created by High Pressure High Temperature (HPHT) growth process. Type II