



ELECTRONIC COPY

LABORATORY GROWN DIAMOND REPORT

September 11, 2025
 IGI Report Number **LG733553648**
 Description **LABORATORY GROWN DIAMOND**
 Shape and Cutting Style **ROUND BRILLIANT**
 Measurements **9.69 - 9.75 X 6.04 MM**

GRADING RESULTS

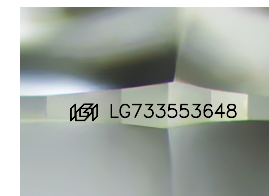
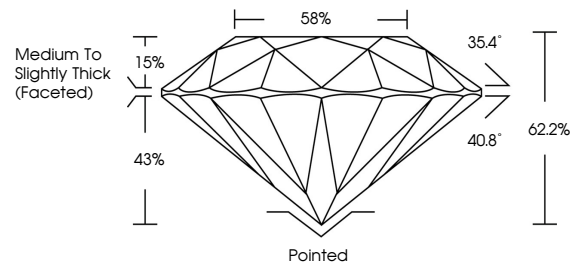
Carat Weight **3.55 CARATS**
 Color Grade **E**
 Clarity Grade **VVS 2**
 Cut Grade **IDEAL**

ADDITIONAL GRADING INFORMATION

Polish **EXCELLENT**
 Symmetry **EXCELLENT**
 Fluorescence **NONE**
 Inscription(s) **IGI LG733553648**

Comments: This Laboratory Grown Diamond was created by Chemical Vapor Deposition (CVD) growth process. Type IIa

PROPORTIONS



Sample Image Used

COLOR

D E F G H I J Faint Very Light Light

CLARITY

IF VS¹⁻² VS¹⁻² SI¹⁻² I¹⁻³

Internally Flawless Very Very Slightly Included Very Slightly Included Slightly Included Included



September 11, 2025
 IGI Report Number **LG733553648**
 Description **LABORATORY GROWN DIAMOND**
 Shape and Cutting Style **ROUND BRILLIANT**
 Measurements **9.69 - 9.75 X 6.04 MM**

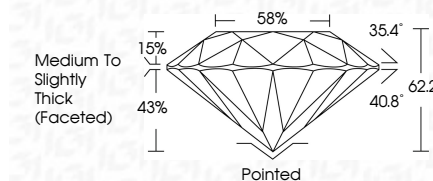
GRADING RESULTS

Carat Weight **3.55 CARATS**
 Color Grade **E**
 Clarity Grade **VVS 2**
 Cut Grade **IDEAL**

ADDITIONAL GRADING INFORMATION

Polish **EXCELLENT**
 Symmetry **EXCELLENT**
 Fluorescence **NONE**
 Inscription(s) **IGI LG733553648**

Comments: This Laboratory Grown Diamond was created by Chemical Vapor Deposition (CVD) growth process. Type IIa



IGI



September 11, 2025
 IGI Report No LG733553648
 ROUND BRILLIANT

9.69 - 9.75 X 6.04 MM

3.55 CARATS
 E
 VVS 2
 IDEAL
 62.2%
 58%
 Medium To Slightly Thick (Faceted)

Pointed
 EXCELLENT
 EXCELLENT
 NONE
 IGI LG733553648

Comments: This Laboratory Grown Diamond was created by Chemical Vapor Deposition (CVD) growth process. Type IIa