



ELECTRONIC COPY

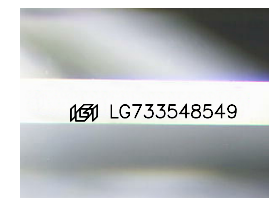
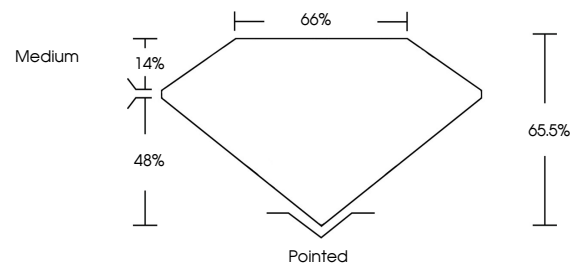
LG733548549
Report verification at igi.org



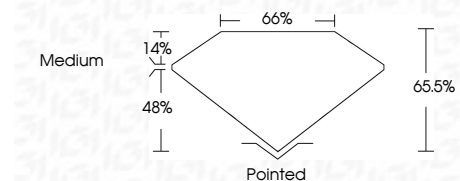
September 13, 2025
IGI Report Number **LG733548549**
Description **LABORATORY GROWN DIAMOND**
Shape and Cutting Style **CUT CORNERED
RECTANGULAR MODIFIED
BRILLIANT**
Measurements **12.09 X 8.34 X 5.46 MM**
GRADING RESULTS
Carat Weight **4.91 CARATS**
Color Grade **F**
Clarity Grade **VS 1**

September 13, 2025
IGI Report Number **LG733548549**
Description **LABORATORY GROWN DIAMOND**
Shape and Cutting Style **CUT CORNERED RECTANGULAR
MODIFIED BRILLIANT**
Measurements **12.09 X 8.34 X 5.46 MM**

PROPORTIONS



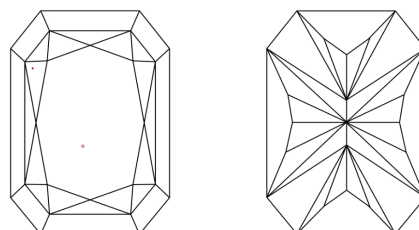
Sample Image Used



GRADING RESULTS

Carat Weight **4.91 CARATS**
Color Grade **F**
Clarity Grade **VS 1**

CLARITY CHARACTERISTICS



KEY TO SYMBOLS

Red symbols indicate internal characteristics.
Green symbols indicate external characteristics.

COLOR

D E F G H I J Faint Very Light Light

CLARITY

| | | | | |
|---------------------|-----------------------------|------------------------|-------------------|------------------|
| IF | VS ¹⁻² | VS ¹⁻² | SI ¹⁻² | I ¹⁻³ |
| Internally Flawless | Very Very Slightly Included | Very Slightly Included | Slightly Included | Included |

ADDITIONAL GRADING INFORMATION

Polish **EXCELLENT**
Symmetry **EXCELLENT**
Fluorescence **NONE**
Inscription(s) **IGI LG733548549**
Comments: This Laboratory Grown Diamond was created by Chemical Vapor Deposition (CVD) growth process. Type IIa

ADDITIONAL GRADING INFORMATION

Polish **EXCELLENT**
Symmetry **EXCELLENT**
Fluorescence **NONE**
Inscription(s) **IGI LG733548549**

Comments: This Laboratory Grown Diamond was created by Chemical Vapor Deposition (CVD) growth process. Type IIa



IGI

September 13, 2025
IGI Report No. LG733548549
CUT CORNERED RECT. MODIFIED BRILLIANT
12.09 X 8.34 X 5.46 MM
4.91 CARATS
F
VS 1
65.5%
65%
Medium
Pointed
EXCELLENT
EXCELLENT
NONE
IGI LG733548549

Comments: This Laboratory Grown Diamond was created by Chemical Vapor Deposition (CVD) growth process. Type IIa