



**ELECTRONIC COPY**

LG733548478  
Report verification at igi.org



September 11, 2025  
IGI Report Number **LG733548478**  
Description **LABORATORY GROWN DIAMOND**  
Shape and Cutting Style **RECTANGULAR CUSHION  
BRILLIANT**  
Measurements **10.14 X 6.42 X 3.85 MM**  
**GRADING RESULTS**  
Carat Weight **2.14 CARATS**  
Color Grade **E**  
Clarity Grade **VS 1**

**LABORATORY GROWN DIAMOND REPORT**

September 11, 2025  
IGI Report Number **LG733548478**  
Description **LABORATORY GROWN DIAMOND**  
Shape and Cutting Style **RECTANGULAR CUSHION  
BRILLIANT**  
Measurements **10.14 X 6.42 X 3.85 MM**

**GRADING RESULTS**

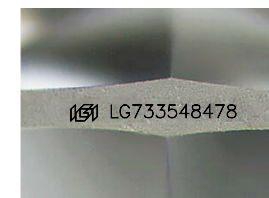
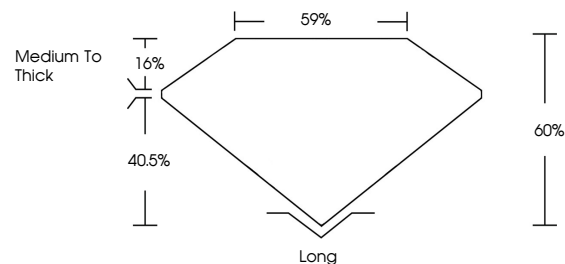
Carat Weight **2.14 CARATS**  
Color Grade **E**  
Clarity Grade **VS 1**

**ADDITIONAL GRADING INFORMATION**

Polish **EXCELLENT**  
Symmetry **EXCELLENT**  
Fluorescence **NONE**  
Inscription(s) **IGI LG733548478**

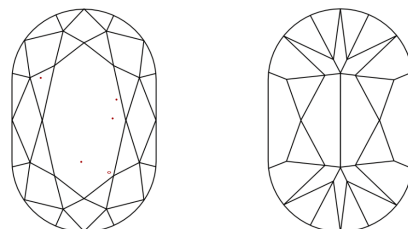
Comments: This Laboratory Grown Diamond was created by Chemical Vapor Deposition (CVD) growth process.  
Type IIa

**PROPORTIONS**



Sample Image Used

**CLARITY CHARACTERISTICS**



**KEY TO SYMBOLS**

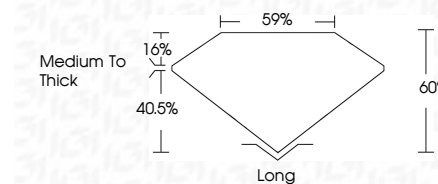
Red symbols indicate internal characteristics.  
Green symbols indicate external characteristics.

**COLOR**

D E F G H I J Faint Very Light Light

**CLARITY**

IF	VS <sup>1-2</sup>	VS <sup>1-2</sup>	SI <sup>1-2</sup>	I <sup>1-3</sup>
Internally Flawless	Very Very Slightly Included	Very Slightly Included	Slightly Included	Included



**ADDITIONAL GRADING INFORMATION**

Polish **EXCELLENT**  
Symmetry **EXCELLENT**  
Fluorescence **NONE**  
Inscription(s) **IGI LG733548478**  
Comments: This Laboratory Grown Diamond was created by Chemical Vapor Deposition (CVD) growth process.  
Type IIa



September 11, 2025  
IGI Report No LG733548478  
RECTANGULAR CUSHION BRILLIANT  
10.14 X 6.42 X 3.85 MM  
Carat Weight **2.14 CARATS**  
Color Grade **E**  
Clarity Grade **VS 1**  
Depth **60%**  
Table **1.6%**  
Girdle **Medium To Thick**  
Culet **Long**  
Polish **EXCELLENT**  
Symmetry **EXCELLENT**  
Fluorescence **NONE**  
Inscription(s) **IGI LG733548478**  
Comments: This Laboratory Grown Diamond was created by Chemical Vapor Deposition (CVD) growth process.  
Type IIa