



**ELECTRONIC COPY**

LG733548462  
Report verification at igi.org



September 11, 2025  
IGI Report Number **LG733548462**  
Description **LABORATORY GROWN DIAMOND**

Shape and Cutting Style **ROUND CORNERED  
RECTANGULAR MODIFIED  
BRILLIANT**

Measurements **10.04 X 6.39 X 3.81 MM**

**GRADING RESULTS**

Carat Weight **2.27 CARATS**  
Color Grade **G**  
Clarity Grade **VVS 2**

September 11, 2025  
IGI Report Number **LG733548462**  
Description **LABORATORY GROWN DIAMOND**  
Shape and Cutting Style **ROUND CORNERED  
RECTANGULAR MODIFIED  
BRILLIANT**  
Measurements **10.04 X 6.39 X 3.81 MM**

**GRADING RESULTS**

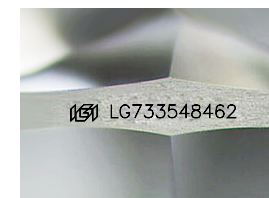
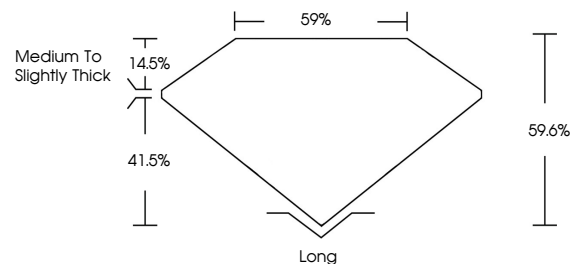
Carat Weight **2.27 CARATS**  
Color Grade **G**  
Clarity Grade **VVS 2**

**ADDITIONAL GRADING INFORMATION**

Polish **EXCELLENT**  
Symmetry **EXCELLENT**  
Fluorescence **NONE**  
Inscription(s) **IGI LG733548462**

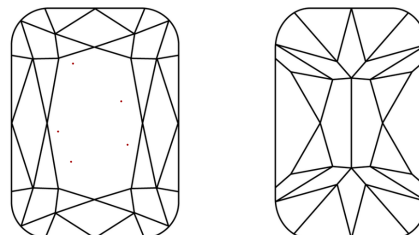
Comments: This Laboratory Grown Diamond was created by Chemical Vapor Deposition (CVD) growth process. Type IIa

**PROPORTIONS**



Sample Image Used

**CLARITY CHARACTERISTICS**



**KEY TO SYMBOLS**

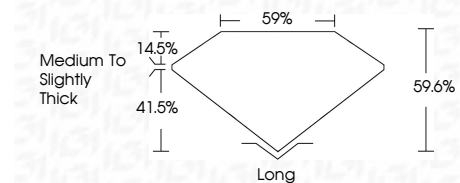
Red symbols indicate internal characteristics.  
Green symbols indicate external characteristics.

**COLOR**

D E F G H I J Faint Very Light Light

**CLARITY**

IF	WS <sup>1-2</sup>	VS <sup>1-2</sup>	SI <sup>1-2</sup>	I <sup>1-3</sup>
Internally Flawless	Very Very Slightly Included	Very Slightly Included	Slightly Included	Included



**ADDITIONAL GRADING INFORMATION**

Polish **EXCELLENT**  
Symmetry **EXCELLENT**  
Fluorescence **NONE**  
Inscription(s) **IGI LG733548462**  
Comments: This Laboratory Grown Diamond was created by Chemical Vapor Deposition (CVD) growth process. Type IIa



September 11, 2025  
IGI Report No LG733548462  
**ROUND CORNERED RECT. MODIFIED  
BRILLIANT**  
10.04 X 6.39 X 3.81 MM  
Carat Weight **2.27 CARATS**  
Color Grade **G**  
Clarity Grade **VVS 2**  
Depth **59.6%**  
Table **59%**  
Girdle **Medium to Slightly Thick**  
Culet **Long**  
Polish **EXCELLENT**  
Symmetry **EXCELLENT**  
Fluorescence **NONE**  
Inscription(s) **IGI LG733548462**  
Comments: This Laboratory Grown Diamond was created by Chemical Vapor Deposition (CVD) growth process. Type IIa