



**ELECTRONIC COPY**

LG733548452  
Report verification at igi.org



September 11, 2025

IGI Report Number **LG733548452**

Description **LABORATORY GROWN DIAMOND**

Shape and Cutting Style **ROUND CORNERED  
RECTANGULAR MODIFIED  
BRILLIANT**

Measurements **9.90 X 6.11 X 3.83 MM**

**GRADING RESULTS**

Carat Weight **2.18 CARATS**

Color Grade **F**

Clarity Grade **VVS 2**

**LABORATORY GROWN DIAMOND REPORT**

September 11, 2025

IGI Report Number **LG733548452**

Description **LABORATORY GROWN DIAMOND**

Shape and Cutting Style **ROUND CORNERED  
RECTANGULAR MODIFIED  
BRILLIANT**

Measurements **9.90 X 6.11 X 3.83 MM**

**GRADING RESULTS**

Carat Weight **2.18 CARATS**

Color Grade **F**

Clarity Grade **VVS 2**

**ADDITIONAL GRADING INFORMATION**

Polish **EXCELLENT**

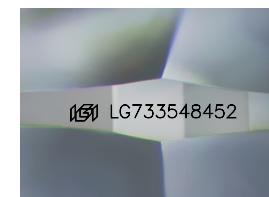
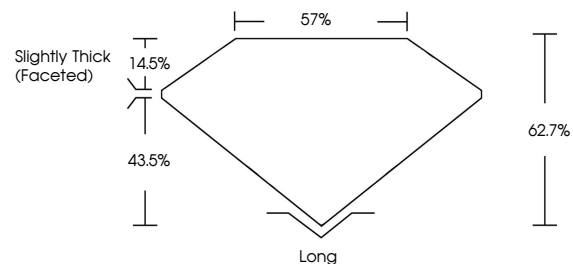
Symmetry **EXCELLENT**

Fluorescence **NONE**

Inscription(s) **IGI LG733548452**

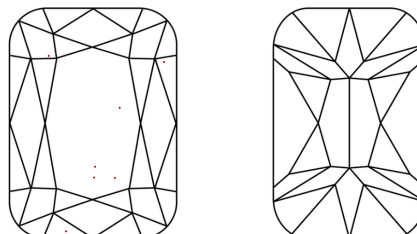
Comments: This Laboratory Grown Diamond was created by Chemical Vapor Deposition (CVD) growth process. Type IIa

**PROPORTIONS**



Sample Image Used

**CLARITY CHARACTERISTICS**



**KEY TO SYMBOLS**

Red symbols indicate internal characteristics.  
Green symbols indicate external characteristics.

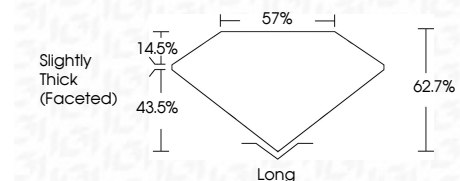
**COLOR**

D E F G H I J Faint Very Light Light

**CLARITY**

IF WS<sup>1-2</sup> VS<sup>1-2</sup> SI<sup>1-2</sup> I<sup>1-3</sup>

Internally Flawless Very Very Slightly Included Very Slightly Included Slightly Included Included



**ADDITIONAL GRADING INFORMATION**

Polish **EXCELLENT**

Symmetry **EXCELLENT**

Fluorescence **NONE**

Inscription(s) **IGI LG733548452**

Comments: This Laboratory Grown Diamond was created by Chemical Vapor Deposition (CVD) growth process. Type IIa



September 11, 2025  
IGI Report No LG733548452  
**ROUND CORNERED RECT. MODIFIED  
BRILLIANT**  
9.90 X 6.11 X 3.83 MM

Carat Weight **2.18 CARATS**  
Color Grade **F**  
Clarity Grade **VVS 2**  
Depth **43.5%**  
Table **14.5%**  
Girdle **Slightly Thick (Faceted)**

Long **62.7%**  
Culet **None**  
Polish **EXCELLENT**  
Symmetry **EXCELLENT**  
Fluorescence **NONE**  
Inscription(s) **IGI LG733548452**

Comments: This Laboratory Grown Diamond was created by Chemical Vapor Deposition (CVD) growth process. Type IIa