



**ELECTRONIC COPY**

LG733548380  
Report verification at [igi.org](http://igi.org)



September 12, 2025  
IGI Report Number **LG733548380**  
Description **LABORATORY GROWN DIAMOND**  
Shape and Cutting Style **HEPTAGONAL MODIFIED STEP CUT**

Measurements **10.18 X 8.22 X 4.85 MM**

**GRADING RESULTS**  
Carat Weight **2.50 CARATS**  
Color Grade **E**  
Clarity Grade **VS 1**

September 12, 2025  
IGI Report Number **LG733548380**  
Description **LABORATORY GROWN DIAMOND**  
Shape and Cutting Style **HEPTAGONAL MODIFIED STEP CUT**  
Measurements **10.18 X 8.22 X 4.85 MM**

**GRADING RESULTS**

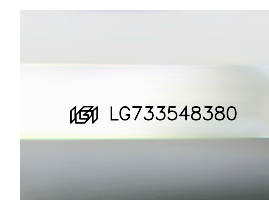
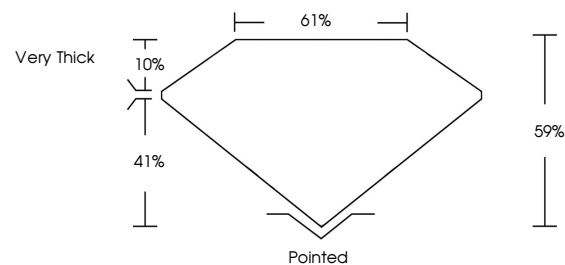
Carat Weight **2.50 CARATS**  
Color Grade **E**  
Clarity Grade **VS 1**

**ADDITIONAL GRADING INFORMATION**

Polish **EXCELLENT**  
Symmetry **VERY GOOD**  
Fluorescence **NONE**  
Inscription(s) **IGI LG733548380**

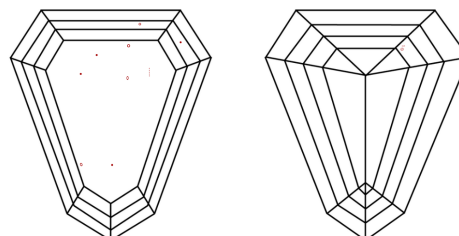
Comments: This Laboratory Grown Diamond was created by Chemical Vapor Deposition (CVD) growth process.  
Type IIa

**PROPORTIONS**



Sample Image Used

**CLARITY CHARACTERISTICS**



**KEY TO SYMBOLS**

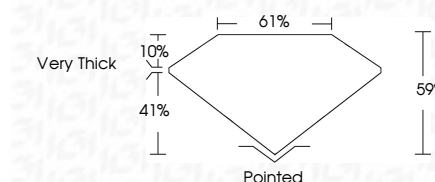
Red symbols indicate internal characteristics.  
Green symbols indicate external characteristics.

**COLOR**

D E F G H I J Faint Very Light Light

**CLARITY**

IF	VS <sup>1-2</sup>	VS <sup>1-2</sup>	SI <sup>1-2</sup>	I <sup>1-3</sup>
Internally Flawless	Very Very Slightly Included	Very Slightly Included	Slightly Included	Included



**ADDITIONAL GRADING INFORMATION**

Polish **EXCELLENT**  
Symmetry **VERY GOOD**  
Fluorescence **NONE**  
Inscription(s) **IGI LG733548380**  
Comments: This Laboratory Grown Diamond was created by Chemical Vapor Deposition (CVD) growth process.  
Type IIa



September 12, 2025  
IGI Report No LG733548380  
**HEPTAGONAL MODIFIED STEP CUT**  
10.18 X 8.22 X 4.85 MM  
2.50 CARATS  
E  
VS 1  
59%  
61%  
Very Thick  
Pointed  
EXCELLENT  
VERY GOOD  
NONE  
IGI LG733548380

Comments: This Laboratory Grown Diamond was created by Chemical Vapor Deposition (CVD) growth process.  
Type IIa