



ELECTRONIC COPY

LG733548145
Report verification at igi.org



September 10, 2025

IGI Report Number **LG733548145**

Description **LABORATORY GROWN DIAMOND**

Shape and Cutting Style **ROUND BRILLIANT**

Measurements **9.05 - 9.07 X 5.67 MM**

GRADING RESULTS

Carat Weight **2.89 CARATS**

Color Grade **E**

Clarity Grade **VVS 2**

Cut Grade **EXCELLENT**

September 10, 2025
IGI Report Number **LG733548145**
Description **LABORATORY GROWN DIAMOND**
Shape and Cutting Style **ROUND BRILLIANT**
Measurements **9.05 - 9.07 X 5.67 MM**

GRADING RESULTS

Carat Weight **2.89 CARATS**

Color Grade **E**

Clarity Grade **VVS 2**

Cut Grade **EXCELLENT**

ADDITIONAL GRADING INFORMATION

Polish **EXCELLENT**

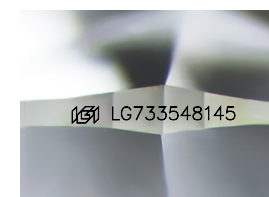
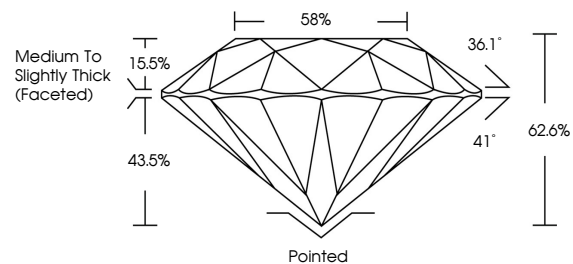
Symmetry **EXCELLENT**

Fluorescence **NONE**

Inscription(s) **LG733548145**

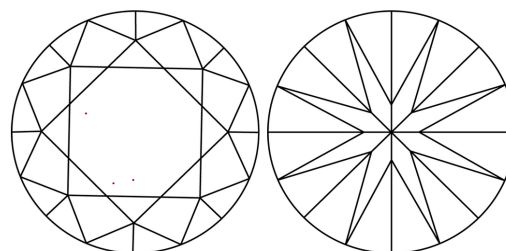
Comments: This Laboratory Grown Diamond was created by Chemical Vapor Deposition (CVD) growth process.
Type IIa

PROPORTIONS



Sample Image Used

CLARITY CHARACTERISTICS



KEY TO SYMBOLS

Red symbols indicate internal characteristics.
Green symbols indicate external characteristics.

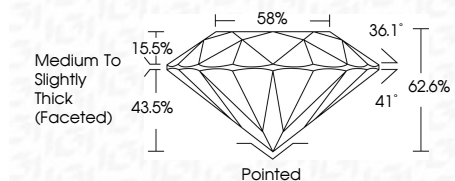
COLOR

D E F G H I J Faint Very Light Light

CLARITY

IF WS¹⁻² VS¹⁻² SI¹⁻² I¹⁻³

Internally Flawless Very Very Slightly Included Very Slightly Included Slightly Included Included



ADDITIONAL GRADING INFORMATION

Polish **EXCELLENT**

Symmetry **EXCELLENT**

Fluorescence **NONE**

Inscription(s) **LG733548145**

Comments: This Laboratory Grown Diamond was created by Chemical Vapor Deposition (CVD) growth process.
Type IIa



IGI



September 10, 2025	IGI Report No LG733548145	2.89 CARATS	E	VVS 2	EXCELLENT	58%	36.1°	41°	62.6%	Pointed	EXCELLENT	EXCELLENT	NONE	LG733548145
ROUND BRILLIANT		Carat Weight	Color Grade	Clarity Grade	Cut Grade	Table	Crown Angle	Pavilion Angle	Pavilion Depth	Culet	Polish	Symmetry	Fluorescence	Inscription(s)
		9.05 - 9.07 X 5.67 MM								Medium To Slightly Thick (Faceted)				

Comments: This Laboratory Grown Diamond was created by Chemical Vapor Deposition (CVD) growth process.
Type IIa