



**ELECTRONIC COPY**

## LABORATORY GROWN DIAMOND REPORT

November 25, 2025	
IGI Report Number	LG733544234
Description	LABORATORY GROWN DIAMOND
Shape and Cutting Style	ROUND BRILLIANT
Measurements	8.42 - 8.51 X 5.23 MM

## GRADING RESULTS

Carat Weight	2.34 CARATS
Color Grade	E
Clarity Grade	VS 2
Cut Grade	IDEAL

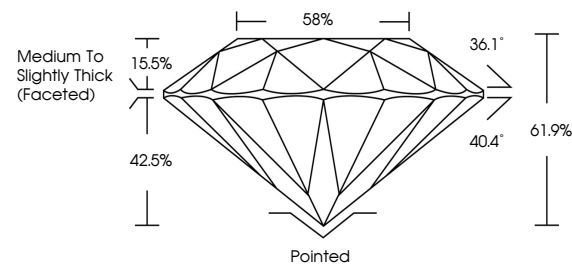
### ADDITIONAL GRADING INFORMATION

Polish	EXCELLENT
Symmetry	EXCELLENT
Fluorescence	NONE
Inscription(s)	 LG733544234

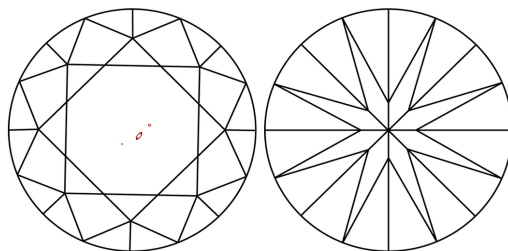
Comments: This Laboratory Grown Diamond was created by Chemical Vapor Deposition (CVD) growth process.  
Type IIa

LG733544234  
Report verification at [igi.org](https://igi.org)

## PROPORTIONS

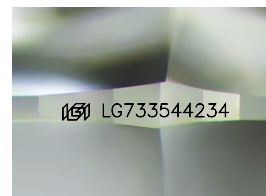


## CLARITY CHARACTERISTICS



## KEY TO SYMBOLS

Red symbols indicate internal characteristics.  
Green symbols indicate external characteristics.



Sample Image Used

**COLOR**

D E F G H I J Faint Very Light Light

## CLARITY

FL	IF	VVS <sup>1-2</sup>	VS <sup>1-2</sup>	SI <sup>1-2</sup>	I <sup>1-3</sup>
Flawless	Internally Flawless	Very Very Slightly Included	Very Slightly Included	Slightly Included	Included

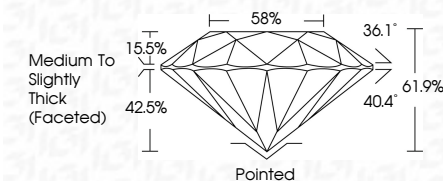
## LABORATORY GROWN DIAMOND REPORT



November 25, 2025	
IGI Report Number	LG733544234
Description	LABORATORY GROWN DIAMOND
Shape and Cutting Style	ROUND BRILLIANT
Measurements	8.42 - 8.51 X 5.23 MM

## GRADING RESULTS

Carat Weight	2.34 CARATS
Color Grade	E
Clarity Grade	VS 2
Cut Grade	IDEAL



### ADDITIONAL GRADING INFORMATION

Polish	EXCELLENT
Symmetry	EXCELLENT
Fluorescence	NONE
Inscription(s)	(L) LG733544234
<p>Comments: This Laboratory Grown Diamond was created by Chemical Vapor Deposition (CVD) growth process.</p> <p>Type IIa</p>	



© IGI 2020, International Gemological Institute

FD - 10 20



THIS DOCUMENT WAS PRODUCED WITH THE FOLLOWING SECURITY MEASURES: SPECIAL DOCUMENT PAPER, INK SCREENS, WATERMARK, BACKGROUND DESIGNS, HOLOGRAM AND OTHER SECURITY FEATURES NOT LISTED AND DO EXCEED DOCUMENT SECURITY INDUSTRY GUIDELINES

**www.igi.org**

November 25, 2025  
IGI Report No LG733544234  
ROUND BRILLIANT

18.02 - 8.51 X 5.23 MM	Carat Weight	2.34 CARATS
	Color Grade	E
	Clarity Grade	VS 2
	Cut Grade	IDPAL
	Depth	61.9%
	Table	58%
	Girdle	Medium To Slightly Thick (Faceted)
	Culet	Pointed
	Polish	EXCELLENT
	Symmetry	EXCELLENT
	Fluorescence	NONE
	Inspection	see certificate

**Comments:**  
This Laboratory Grown Diamond was created by Chemical Vapor Deposition (CVD) growth process.