



ELECTRONIC COPY

LG733541690
Report verification at igi.org



September 16, 2025
IGI Report Number **LG733541690**
Description **LABORATORY GROWN DIAMOND**
Shape and Cutting Style **EMERALD CUT**
Measurements **12.48 X 8.31 X 5.34 MM**
GRADING RESULTS
Carat Weight **5.56 CARATS**
Color Grade **FANCY INTENSE PINK**
Clarity Grade **VS 1**

September 16, 2025
IGI Report Number **LG733541690**
Description **LABORATORY GROWN DIAMOND**
Shape and Cutting Style **EMERALD CUT**
Measurements **12.48 X 8.31 X 5.34 MM**

GRADING RESULTS

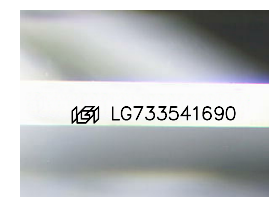
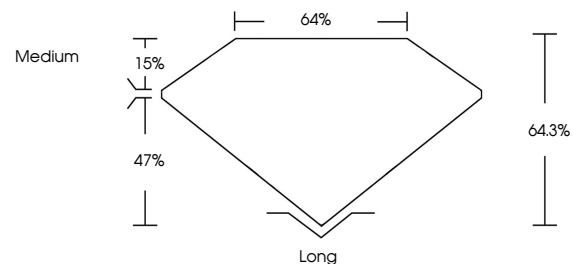
Carat Weight **5.56 CARATS**
Color Grade **FANCY INTENSE PINK**
Clarity Grade **VS 1**

ADDITIONAL GRADING INFORMATION

Polish **EXCELLENT**
Symmetry **EXCELLENT**
Fluorescence **STRONG**
Inscription(s) **LG733541690**

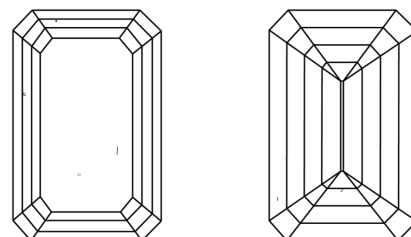
Comments: This Laboratory Grown Diamond was created by Chemical Vapor Deposition (CVD) growth process.
Indications of post-growth treatment.

PROPORTIONS



Sample Image Used

CLARITY CHARACTERISTICS



KEY TO SYMBOLS

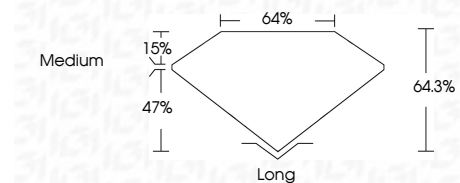
Red symbols indicate internal characteristics.
Green symbols indicate external characteristics.

COLOR

D E F G H I J Faint Very Light Light

CLARITY

| | | | | |
|---------------------|-----------------------------|------------------------|-------------------|------------------|
| IF | VS ¹⁻² | VS ¹⁻² | SI ¹⁻² | I ¹⁻³ |
| Internally Flawless | Very Very Slightly Included | Very Slightly Included | Slightly Included | Included |



ADDITIONAL GRADING INFORMATION

Polish **EXCELLENT**
Symmetry **EXCELLENT**
Fluorescence **STRONG**
Inscription(s) **LG733541690**
Comments: This Laboratory Grown Diamond was created by Chemical Vapor Deposition (CVD) growth process.
Indications of post-growth treatment.



September 16, 2025
IGI Report No. LG733541690
EMERALD CUT
12.48 X 8.31 X 5.34 MM
5.56 CARATS
FANCY INTENSE PINK
VS 1
64.3%
47%
Medium
Long
EXCELLENT
EXCELLENT
STRONG
IGI LG733541690
Comments: This Laboratory Grown Diamond was created by Chemical Vapor Deposition (CVD) growth process.
Indications of post-growth treatment.