



ELECTRONIC COPY

LG733537981
Report verification at igi.org



September 12, 2025

IGI Report Number **LG733537981**

Description **LABORATORY GROWN DIAMOND**

Shape and Cutting Style **HEXAGONAL MODIFIED STEP CUT**

Measurements **16.28 X 7.92 X 5.03 MM**

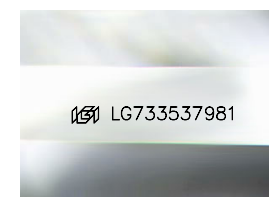
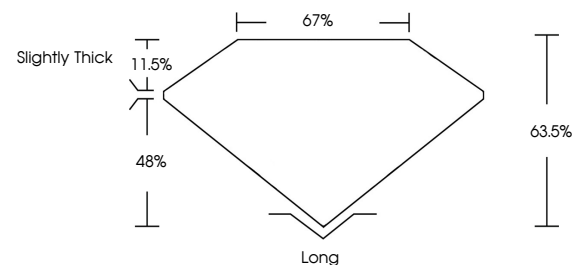
GRADING RESULTS

Carat Weight **5.04 CARATS**

Color Grade **E**

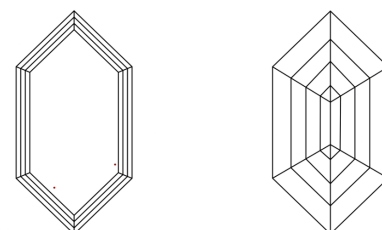
Clarity Grade **VVS 2**

PROPORTIONS



Sample Image Used

CLARITY CHARACTERISTICS



KEY TO SYMBOLS

Red symbols indicate internal characteristics.
Green symbols indicate external characteristics.

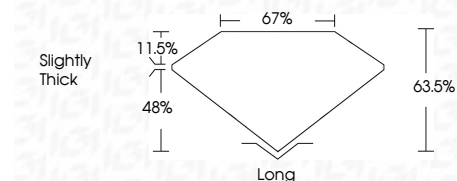
COLOR

D E F G H I J Faint Very Light Light

CLARITY

IF WS¹⁻² VS¹⁻² SI¹⁻² I¹⁻³

Internally Flawless Very Very Slightly Included Very Slightly Included Slightly Included Included



ADDITIONAL GRADING INFORMATION

Polish **EXCELLENT**

Symmetry **EXCELLENT**

Fluorescence **NONE**

Inscription(s) **IGI LG733537981**

Comments: This Laboratory Grown Diamond was created by Chemical Vapor Deposition (CVD) growth process. Type IIa



September 12, 2025
IGI Report No LG733537981
HEXAGONAL MODIFIED STEP CUT
5.04 CARATS
E
5.04 CARATS
VVS 2
5.04 CARATS
E
VVS 2
16.28 X 7.92 X 5.03 MM
Slightly Thick
Long
EXCELLENT
EXCELLENT
NONE
IGI LG733537981
Comments: This Laboratory Grown Diamond was created by Chemical Vapor Deposition (CVD) growth process. Type IIa