



**INTERNATIONAL  
GEMOLOGICAL  
INSTITUTE**

**ELECTRONIC COPY**

## LABORATORY GROWN DIAMOND REPORT

LG733536877  
Report verification at [igi.org](https://igi.org)

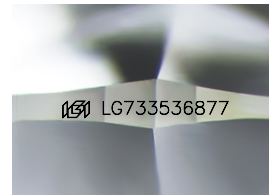
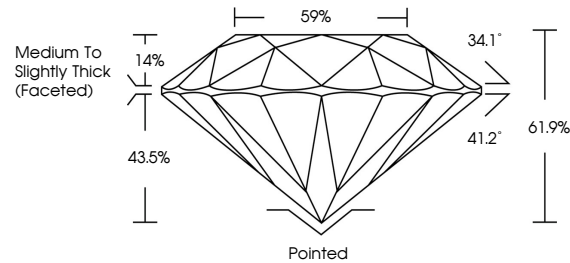
September 12, 2025	
IGI Report Number	LG733536877
Description	LABORATORY GROWN DIAMOND
Shape and Cutting Style	ROUND BRILLIANT
Measurements	9.21 - 9.23 X 5.70 MM
GRADING RESULTS	
Carat Weight	3.01 CARATS
Color Grade	E
Clarity Grade	VVS2
Cut Grade	IDEAL

### ADDITIONAL GRADING INFORMATION

Polish	EXCELLENT
Symmetry	EXCELLENT
Fluorescence	NONE
Inscription(s)	 LG733536877

Comments: This Laboratory Grown Diamond was created by Chemical Vapor Deposition (CVD) growth process.  
Type IIa

## PROPORTIONS



Sample Image Used

**COLOR**

D E F G H I J Faint Very Light Light

## CLARITY

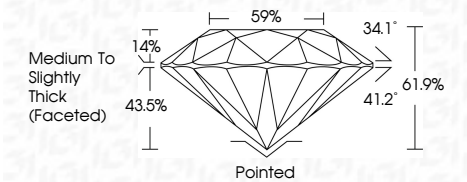
IF                      WS<sup>1-2</sup>                      VS<sup>1-2</sup>                      SI<sup>1-2</sup>                      I<sup>1-3</sup>

Internally Flawless	Very Very Slightly Included	Very Slightly Included	Slightly Included	Included
------------------------	--------------------------------	---------------------------	----------------------	----------

## LABORATORY GROWN DIAMOND REPORT



September 22, 2025	
IGI Report Number	LG733536877
Description	LABORATORY GROWN DIAMOND
Shape and Cutting Style	ROUND BRILLIANT
Measurements	9.21 - 9.23 X 5.70 MM
<b>GRADING RESULTS</b>	
Carat Weight	3.01 CARATS
Color Grade	E
Clarity Grade	VVS 2
Cut Grade	IDEAL



### ADDITIONAL GRADING INFORMATION

Polish	EXCELLENT
Symmetry	EXCELLENT
Fluorescence	NONE
Inscription(s)	 LG733536877
Comments: This Laboratory Grown Diamond was created by Chemical Vapor Deposition (CVD) growth process.	
Type IIa	



IGI



© IGI 2020, International Gemological Institute

FD - 10 20



THIS DOCUMENT WAS PRODUCED WITH THE FOLLOWING SECURITY MEASURES: SPECIAL DOCUMENT PAPER, INK SCREENS, WATERMARK BACKGROUND DESIGNS, HOLOGRAM AND OTHER SECURITY FEATURES NOT LISTED AND DO EXCEED DOCUMENT SECURITY INDUSTRY GUIDELINES.

**www.igi.org**

September 12, 2025  
IGI Report No LG733536877  
ROUND BRILLIANT

9.21 - 9.23 X 5.70 MM	3.01 CARATS
Carat Weight	VVS 2
Color Grade	IDEAL
Clarity Grade	61.9%
Cut Grade	59%
Depth	Medium To Slightly Thick (faceted)
Table	Pointed
Girdle	EXCELLENT
Culet	EXCELLENT
Poin	NONE
Symmetry	(#) 157333339577
Fluorescence	
Inscription(s)	

**Comments:**  
This Laboratory Grown Diamond was created by Chemical Vapor Deposition (CVD) growth process.  
Type IIa