



# INTERNATIONAL GEMOLOGICAL INSTITUTE

ELECTRONIC COPY

## LABORATORY GROWN DIAMOND REPORT

September 10, 2025  
IGI Report Number **LG733535733**  
Description **LABORATORY GROWN DIAMOND**  
Shape and Cutting Style **ROUND BRILLIANT**  
Measurements **4.73 - 4.76 X 2.93 MM**

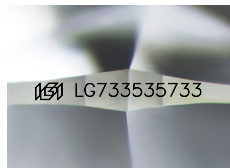
### GRADING RESULTS

Carat Weight **0.41 CARAT**  
Color Grade **G**  
Clarity Grade **VVS 2**  
Cut Grade **EXCELLENT**

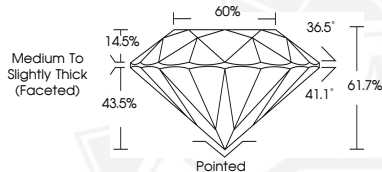
### ADDITIONAL GRADING INFORMATION

Polish **EXCELLENT**  
Symmetry **EXCELLENT**  
Fluorescence **NONE**  
Inscription(s) **IGI LG733535733**

Comments: This Laboratory Grown Diamond was created by Chemical Vapor Deposition (CVD) growth process. Type IIa



Sample Image Used



September 10, 2025  
IGI Report Number **LG733535733**  
**ROUND BRILLIANT**  
**LABORATORY GROWN DIAMOND**  
**4.73 - 4.76 X 2.93 MM**  
Carat Weight **0.41 CARAT**  
Color Grade **G**  
Clarity Grade **VVS 2**  
Cut Grade **EXCELLENT**  
Polish **EXCELLENT**  
Symmetry **EXCELLENT**  
Fluorescence **NONE**  
Inscription(s) **IGI LG733535733**  
Comments: This Laboratory Grown Diamond was created by Chemical Vapor Deposition (CVD) growth process. Type IIa



September 10, 2025  
IGI Report Number **LG733535733**  
**ROUND BRILLIANT**  
**LABORATORY GROWN DIAMOND**  
**4.73 - 4.76 X 2.93 MM**  
Carat Weight **0.41 CARAT**  
Color Grade **G**  
Clarity Grade **VVS 2**  
Cut Grade **EXCELLENT**  
Polish **EXCELLENT**  
Symmetry **EXCELLENT**  
Fluorescence **NONE**  
Inscription(s) **IGI LG733535733**  
Comments: This Laboratory Grown Diamond was created by Chemical Vapor Deposition (CVD) growth process. Type IIa



THIS DOCUMENT WAS PRODUCED WITH THE FOLLOWING SECURITY MEASURES: SPECIAL DOCUMENT PAPER, INK SCREENS, WATERMARK, BACKGROUND DESIGNS, HOLOGRAM AND OTHER SECURITY FEATURES NOT LISTED AND DO EXCEED DOCUMENT SECURITY INDUSTRY GUIDELINES.

For terms & conditions and to verify this report, please visit [www.igi.org](http://www.igi.org)