



**ELECTRONIC COPY**

## LABORATORY GROWN DIAMOND REPORT

|                         |                          |
|-------------------------|--------------------------|
| September 9, 2025       |                          |
| IGI Report Number       | LG733534790              |
| Description             | LABORATORY GROWN DIAMOND |
| Shape and Cutting Style | ROUND BRILLIANT          |
| Measurements            | 6.50 - 6.53 X 4.04 MM    |

## GRADING RESULTS

|               |            |
|---------------|------------|
| Carat Weight  | 1.06 CARAT |
| Color Grade   | D          |
| Clarity Grade | VVS 1      |
| Cut Grade     | IDEAL      |

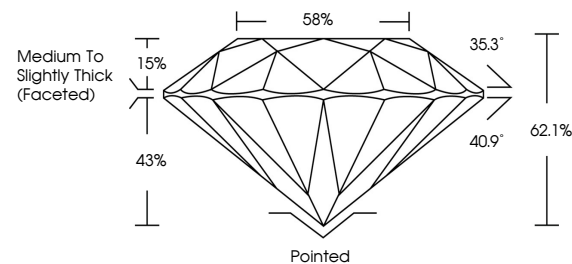
### ADDITIONAL GRADING INFORMATION

|                |   |
|----------------|---|
| Polish         | EXCELLENT   |
| Symmetry       | EXCELLENT   |
| Fluorescence   | NONE  |
| Inscription(s) |  LG733534790 |

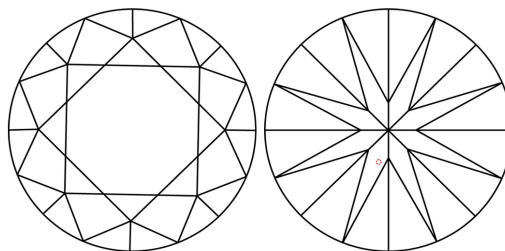
Comments: As Grown - No indication of post-growth treatment.  
This Laboratory Grown Diamond was created by High Pressure High Temperature (HPHT) growth process.  
Type II

LG733534790  
Report verification at [igi.org](https://igi.org)

## PROPORTIONS

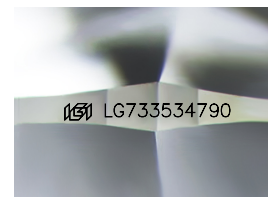


## CLARITY CHARACTERISTICS



## KEY TO SYMBOLS

Red symbols indicate internal characteristics.  
Green symbols indicate external characteristics.



Sample Image Used

## COLOR

D E F G H I J Faint Very Light Light

## CLARITY

IF      WS<sup>1-2</sup>      VS<sup>1-2</sup>      SI<sup>1-2</sup>      |<sup>1-3</sup>

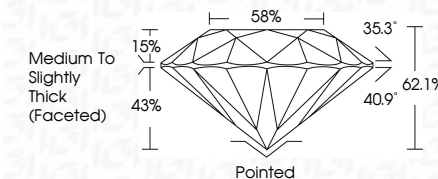
|                        |                                |                           |                      |          |
|------------------------|--------------------------------|---------------------------|----------------------|----------|
| Internally<br>Flawless | Very Very<br>Slightly Included | Very<br>Slightly Included | Slightly<br>Included | Included |
|------------------------|--------------------------------|---------------------------|----------------------|----------|



|                         |                          |
|-------------------------|--------------------------|
| September 9, 2025       |                          |
| IGI Report Number       | LG733534790              |
| Description             | LABORATORY GROWN DIAMOND |
| Shape and Cutting Style | ROUND BRILLIANT          |
| Measurements            | 6.50 - 6.53 X 4.04 MM    |

## GRADING RESULTS

|               |            |
|---------------|------------|
| Carat Weight  | 1.06 CARAT |
| Color Grade   | D          |
| Clarity Grade | VVS 1      |
| Cut Grade     | IDEAL      |



### ADDITIONAL GRADING INFORMATION

|  |   |
|--|---|
| Polish   | EXCELLENT   |
| Symmetry   | EXCELLENT   |
| Fluorescence   | NONE  |
| Inscription(s)   |  LG733534790 |
| Comments: As Grown - No indication of post-growth treatment.                                       |   |
| This Laboratory Grown Diamond was created by High Pressure High Temperature (HPHT) growth process. |   |
| Type II  |   |



© IGI 2020, International Gemological Institute

FD - 10 20



THIS DOCUMENT WAS PRODUCED WITH THE FOLLOWING SECURITY MEASURES: SPECIAL DOCUMENT PAPER, INK SCREENS, WATERMARK, BACKGROUND DESIGNS, HOLOGRAM AND OTHER SECURITY FEATURES NOT LISTED AND DO EXCEED DOCUMENT SECURITY INDUSTRY GUIDELINE

**www.igi.org**

September 9, 2025  
IGI Report No LG7338  
ROUND BRILLIANT

|                       |               |                                    |
|-----------------------|---------------|------------------------------------|
| 6.50 - 6.53 X 0.04 MM | Carat Weight  | 1.06 CARAT                         |
|                       | Color Grade   | D                                  |
|                       | Clarity Grade | VVS 1                              |
|                       | Cut Grade     | IDEAL                              |
|                       | Depth         | 62.1%                              |
|                       | Table         | 58%                                |
|                       | Girdle        | Medium to Slightly Thick (Faceted) |
|                       | Culet         | Pointed                            |
|                       | Polish        | EXCELLENT                          |
|                       | Symmetry      | EXCELLENT                          |
|                       | Fluorescence  | NONE                               |

**Comments:**  
As Grown - No indication of post-growth treatment.  
This Laboratory Grown Diamond was created by High Pressure High Temperature (HPHT) growth process.