



ELECTRONIC COPY

LG733533329
Report verification at igi.org



September 12, 2025
IGI Report Number **LG733533329**
Description **LABORATORY GROWN DIAMOND**
Shape and Cutting Style **CUSHION MODIFIED BRILLIANT**
Measurements **8.93 X 7.28 X 5.05 MM**
GRADING RESULTS
Carat Weight **2.50 CARATS**
Color Grade **E**
Clarity Grade **INTERNALLY FLAWLESS**

LABORATORY GROWN DIAMOND REPORT

September 12, 2025
IGI Report Number **LG733533329**
Description **LABORATORY GROWN DIAMOND**
Shape and Cutting Style **CUSHION MODIFIED BRILLIANT**
Measurements **8.93 X 7.28 X 5.05 MM**

GRADING RESULTS

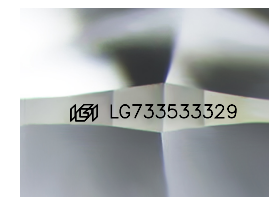
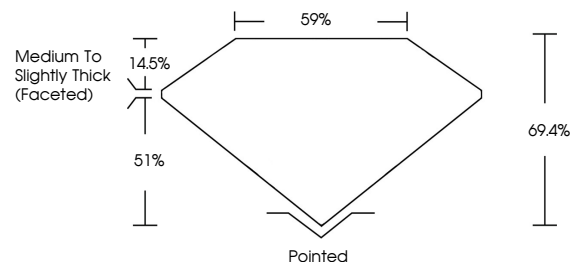
Carat Weight **2.50 CARATS**
Color Grade **E**
Clarity Grade **INTERNALLY FLAWLESS**

ADDITIONAL GRADING INFORMATION

Polish **EXCELLENT**
Symmetry **EXCELLENT**
Fluorescence **NONE**
Inscription(s) **LG733533329**

Comments: As Grown - No indication of post-growth treatment.
This Laboratory Grown Diamond was created by High Pressure High Temperature (HPHT) growth process.
Type II

PROPORTIONS



Sample Image Used

CLARITY CHARACTERISTICS



KEY TO SYMBOLS

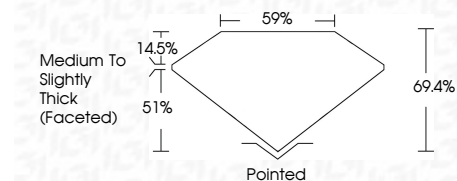
Red symbols indicate internal characteristics.
Green symbols indicate external characteristics.

COLOR

D E F G H I J Faint Very Light Light

CLARITY

IF	VS ¹⁻²	VS ¹⁻²	SI ¹⁻²	I ¹⁻³
Internally Flawless	Very Very Slightly Included	Very Slightly Included	Slightly Included	Included



ADDITIONAL GRADING INFORMATION

Polish **EXCELLENT**
Symmetry **EXCELLENT**
Fluorescence **NONE**
Inscription(s) **LG733533329**
Comments: As Grown - No indication of post-growth treatment.
This Laboratory Grown Diamond was created by High Pressure High Temperature (HPHT) growth process.
Type II



September 12, 2025
IGI Report No LG733533329
CUSHION MODIFIED BRILLIANT
8.93 X 7.28 X 5.05 MM
2.50 CARATS
E
2.50 CARATS
E
LF
69.4%
51%
Medium to Slightly Thick (Faceted)
Pointed
EXCELLENT
EXCELLENT
NONE
NONE
IGI LG733533329
Comments: As Grown - No indication of post-growth treatment.
This Laboratory Grown Diamond was created by High Pressure High Temperature (HPHT) growth process.
Type II