

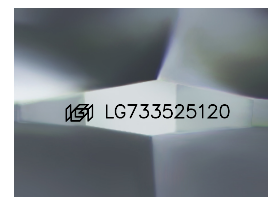
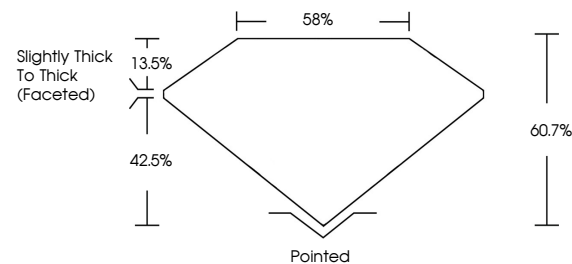


**ELECTRONIC COPY**

## LABORATORY GROWN DIAMOND REPORT

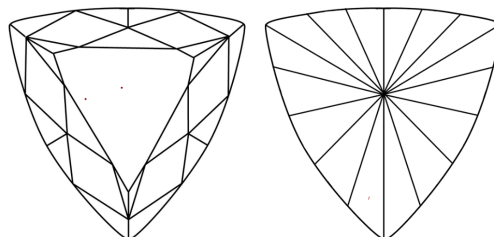
LG733525120  
Report verification at [igi.org](https://igi.org)

## PROPORTIONS



Sample Image Used

## CLARITY CHARACTERISTICS



## KEY TO SYMBOLS

Red symbols indicate internal characteristics.  
Green symbols indicate external characteristics.

## COLOR

D E F G H I J Faint Very Light Light

## CLARITY

IF      VWS<sup>1-2</sup>      VS<sup>1-2</sup>      SI<sup>1-2</sup>      I<sup>1-3</sup>

Internally Flawless	Very Very Slightly Included	Very Slightly Included	Slightly Included	Included
------------------------	--------------------------------	---------------------------	----------------------	----------

## LABORATORY GROWN DIAMOND REPORT



September 11, 2025

IGI Report Number **LG733525120**

Description	LABORATORY GROWN DIAMOND
-------------	--------------------------

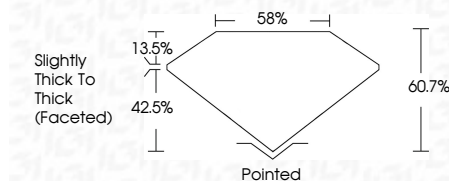
Shape and Cutting Style **TRIANGULAR BRILLIANT**

Measurements **8.75 X 8.98 X 5.45 MM**

## GRADING RESULTS

Carat Weight **2.30 CARATS**

Color Grade	E
-------------	---

Clarity Grade **VVS 2**

### ADDITIONAL GRADING INFORMATION

Polish **EXCELLENT**Symmetry **EXCELLENT**Fluorescence **NONE**Inscription(s)  LG733525120

Comments: This Laboratory Grown Diamond was created by Chemical Vapor Deposition (CVD) growth process.  
Type IIa



© IGI 2020, International Gemological Institute

FD - 10 20

**www.igi.org**

September 11, 2025  
ICI Report No LG733525120  
TRIANGULAR BRILLIANT

.875 X .68 X .645 MM		230 CARATS
Carat Weight	Color Grade	E
Clarity Grade	VVS 2	
Depth	60.7%	
Table	56%	
Girdle	Slightly Thick to Thick (girdled)	
Quiet	Pointed	
Polish	EXCELLENT	
Symmetry	EXCELLENT	
Fluorescence	NONE	
Measurements (mm)	See Certificate	

**Comments:**  
This Laboratory Grown Diamond was created by Chemical Vapor Deposition (CVD) growth process.

THIS DOCUMENT WAS PRODUCED WITH THE FOLLOWING SECURITY MEASURES: SPECIAL DOCUMENT PAPER, INK SCREENS, WATERMARK, BACKGROUND DESIGNS, HOLOGRAM AND OTHER SECURITY FEATURES NOT LISTED AND DO EXCEED DOCUMENT SECURITY INDUSTRY GUIDELINE