



**ELECTRONIC COPY**

LG733524816  
Report verification at igi.org



September 10, 2025

IGI Report Number **LG733524816**

Description **LABORATORY GROWN DIAMOND**

Shape and Cutting Style **ROUND BRILLIANT**

Measurements **8.07 - 8.12 X 4.83 MM**

**GRADING RESULTS**

Carat Weight **2.00 CARATS**

Color Grade **G**

Clarity Grade **VS 2**

Cut Grade **EXCELLENT**

September 10, 2025  
IGI Report Number **LG733524816**  
Description **LABORATORY GROWN DIAMOND**  
Shape and Cutting Style **ROUND BRILLIANT**  
Measurements **8.07 - 8.12 X 4.83 MM**

**GRADING RESULTS**

Carat Weight **2.00 CARATS**

Color Grade **G**

Clarity Grade **VS 2**

Cut Grade **EXCELLENT**

**ADDITIONAL GRADING INFORMATION**

Polish **EXCELLENT**

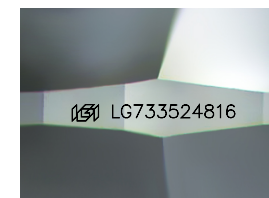
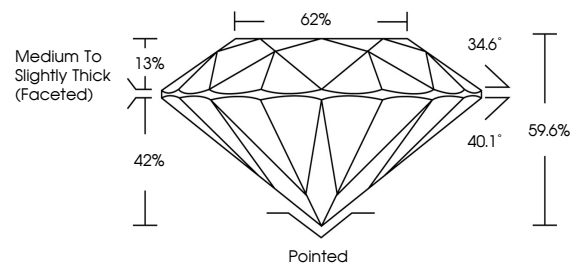
Symmetry **EXCELLENT**

Fluorescence **NONE**

Inscription(s) **IGI LG733524816**

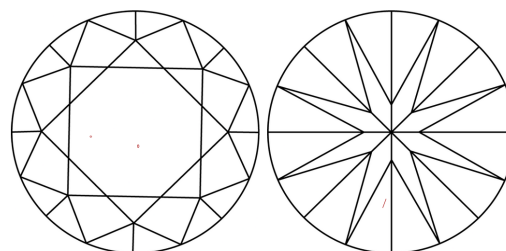
Comments: This Laboratory Grown Diamond was created by Chemical Vapor Deposition (CVD) growth process. Type IIa

**PROPORTIONS**



Sample Image Used

**CLARITY CHARACTERISTICS**



**KEY TO SYMBOLS**

Red symbols indicate internal characteristics.  
Green symbols indicate external characteristics.

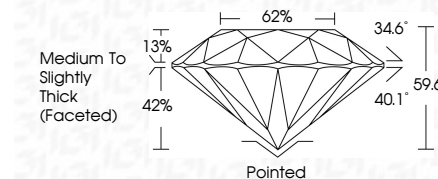
**COLOR**

D E F G H I J Faint Very Light Light

**CLARITY**

IF WS<sup>1-2</sup> VS<sup>1-2</sup> SI<sup>1-2</sup> I<sup>1-3</sup>

Internally Flawless Very Very Slightly Included Very Slightly Included Slightly Included Included



**ADDITIONAL GRADING INFORMATION**

Polish **EXCELLENT**

Symmetry **EXCELLENT**

Fluorescence **NONE**

Inscription(s) **IGI LG733524816**

Comments: This Laboratory Grown Diamond was created by Chemical Vapor Deposition (CVD) growth process. Type IIa



**IGI**



September 10, 2025  
IGI Report No LG733524816  
**ROUND BRILLIANT**  
8.07 - 8.12 X 4.83 MM  
2.00 CARATS  
Color Grade **G**  
Clarity Grade **VS 2**  
Depth **EXCELLENT**  
Table **62%**  
Girdle **Medium To Slightly Thick (Faceted)**  
Culet **Pointed**  
Polish **EXCELLENT**  
Symmetry **EXCELLENT**  
Fluorescence **NONE**  
Inscriptions(s) **IGI LG733524816**  
Comments: This Laboratory Grown Diamond was created by Chemical Vapor Deposition (CVD) growth process. Type IIa