



**ELECTRONIC COPY**

LG733521379  
Report verification at igi.org



September 10, 2025

IGI Report Number **LG733521379**

Description **LABORATORY GROWN DIAMOND**

Shape and Cutting Style **PRINCESS CUT**

Measurements **9.76 X 9.60 X 6.94 MM**

**GRADING RESULTS**

Carat Weight **5.66 CARATS**

Color Grade **E**

Clarity Grade **VVS 2**

September 10, 2025  
IGI Report Number **LG733521379**  
Description **LABORATORY GROWN DIAMOND**  
Shape and Cutting Style **PRINCESS CUT**  
Measurements **9.76 X 9.60 X 6.94 MM**

**GRADING RESULTS**

Carat Weight **5.66 CARATS**

Color Grade **E**

Clarity Grade **VVS 2**

**ADDITIONAL GRADING INFORMATION**

Polish **EXCELLENT**

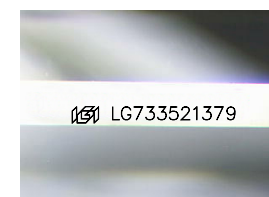
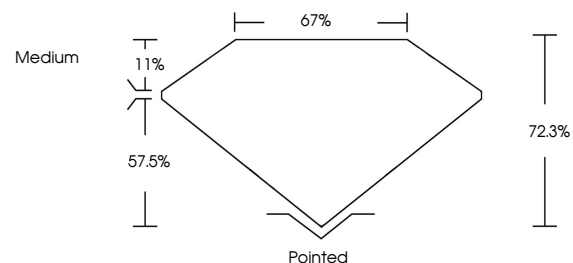
Symmetry **EXCELLENT**

Fluorescence **NONE**

Inscription(s) **IGI LG733521379**

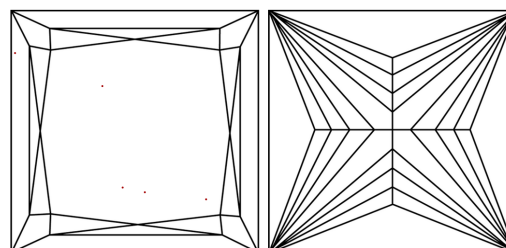
Comments: This Laboratory Grown Diamond was created by Chemical Vapor Deposition (CVD) growth process.  
Type IIa

**PROPORTIONS**



Sample Image Used

**CLARITY CHARACTERISTICS**



**KEY TO SYMBOLS**

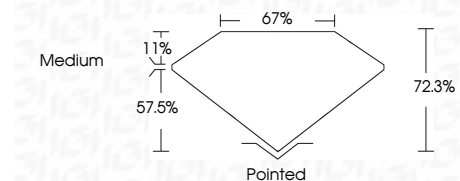
Red symbols indicate internal characteristics.  
Green symbols indicate external characteristics.

**COLOR**

D E F G H I J Faint Very Light Light

**CLARITY**

IF	VS <sup>1-2</sup>	VS <sup>1-2</sup>	SI <sup>1-2</sup>	I <sup>1-3</sup>
Internally Flawless	Very Very Slightly Included	Very Slightly Included	Slightly Included	Included



**ADDITIONAL GRADING INFORMATION**

Polish **EXCELLENT**

Symmetry **EXCELLENT**

Fluorescence **NONE**

Inscription(s) **IGI LG733521379**

Comments: This Laboratory Grown Diamond was created by Chemical Vapor Deposition (CVD) growth process.  
Type IIa



September 10, 2025  
IGI Report No LG733521379  
PRINCESS CUT  
5.66 CARATS E  
Carat Weight  
Color Grade  
Clarity Grade  
Depth  
Table  
Girdle  
Medium  
Pointed  
EXCELLENT  
EXCELLENT  
NONE  
IGI LG733521379  
Comments: This Laboratory Grown Diamond was created by Chemical Vapor Deposition (CVD) growth process.  
Type IIa