



**INTERNATIONAL  
GEMOLOGICAL  
INSTITUTE**

**ELECTRONIC COPY**

## LABORATORY GROWN DIAMOND REPORT

September 9, 2025	
IGI Report Number	LG733521215
Description	LABORATORY GROWN DIAMOND
Shape and Cutting Style	HEXAGONAL MODIFIED STEP CUT
Measurements	21.49 X 10.40 X 7.25 MM

## GRADING RESULTS

Carat Weight	13.52 CARATS
Color Grade	F
Clarity Grade	VVS 2

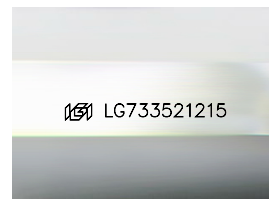
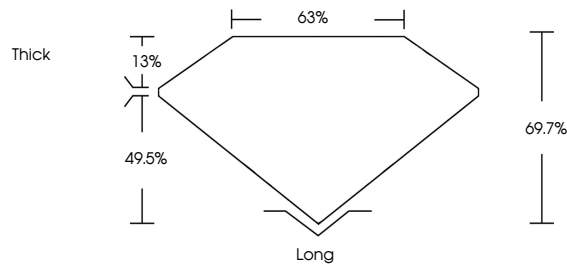
### ADDITIONAL GRADING INFORMATION

Polish	EXCELLENT
Symmetry	EXCELLENT
Fluorescence	NONE
Inscription(s)	 LG733521215

Comments: This Laboratory Grown Diamond was created by Chemical Vapor Deposition (CVD) growth process.  
Type IIa

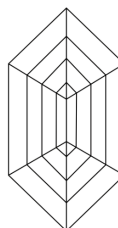
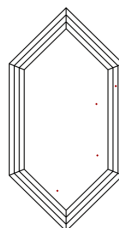
LG733521215  
Report verification at [igi.org](https://igi.org)

## PROPORTIONS



Sample Image Used

## CLARITY CHARACTERISTICS



## KEY TO SYMBOLS

Red symbols indicate internal characteristics.  
Green symbols indicate external characteristics.

## COLOR

D E F G H I J Faint Very Light Light

## CLARITY

IF                      WS<sup>1-2</sup>                      VS<sup>1-2</sup>                      SI<sup>1-2</sup>                      I<sup>1-3</sup>

Internally Flawless	Very Very Slightly Included	Very Slightly Included	Slightly Included	Included
------------------------	--------------------------------	---------------------------	----------------------	----------



© IGI 2020, International Gemological Institute

FD - 10 20

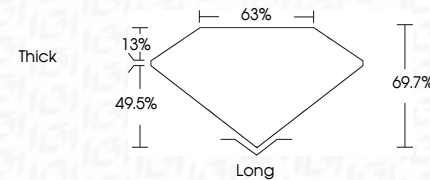
**www.igi.org**

THIS DOCUMENT WAS PRODUCED WITH THE FOLLOWING SECURITY MEASURES: SPECIAL DOCUMENT PAPER, INK SCREENS, WATERMARK, BACKGROUND DESIGNS, HOLOGRAM AND OTHER SECURITY FEATURES NOT LISTED AND DO EXCEED DOCUMENT SECURITY INDUSTRY GUIDELINES

LABORATORY GROWN DIAMOND REPORT



September 9, 2025	
IGI Report Number	LG733521215
Description	LABORATORY GROWN DIAMOND
Shape and Cutting Style	HEXAGONAL MODIFIED STEP CUT
Measurements	21.49 X 10.40 X 7.25 MM
GRADING RESULTS	
Carat Weight	13.52 CARATS
Color Grade	F
Clarity Grade	VVS 2



### ADDITIONAL GRADING INFORMATION

Polish	EXCELLENT
Symmetry	EXCELLENT
Fluorescence	NONE
Inscription(s)	<del>151</del> LG733521215
Comments: This Laboratory Grown Diamond was created by Chemical Vapor Deposition (CVD) growth process.	
Type IIa	



IG

	VVS 2	Long
	69.7%	EXCELLENT
	68%	EXCELLENT
	Thick	NONE
		GSI L6733S21215
<b>Comments:</b>		
This Laboratory Grown Diamond was created by Chemical Vapor Deposition (CVD) growth process.		
Type IIC		