



ELECTRONIC COPY

LG733520292
Report verification at igi.org



September 17, 2025
IGI Report Number **LG733520292**
Description **LABORATORY GROWN DIAMOND**
Shape and Cutting Style **CUT CORNERED
RECTANGULAR MODIFIED
BRILLIANT**
Measurements **9.01 X 5.95 X 3.74 MM**
GRADING RESULTS
Carat Weight **1.84 CARAT**
Color Grade **FANCY INTENSE PINK**
Clarity Grade **VS 2**

September 17, 2025
IGI Report Number **LG733520292**
Description **LABORATORY GROWN DIAMOND**
Shape and Cutting Style **CUT CORNERED RECTANGULAR
MODIFIED BRILLIANT**
Measurements **9.01 X 5.95 X 3.74 MM**

GRADING RESULTS

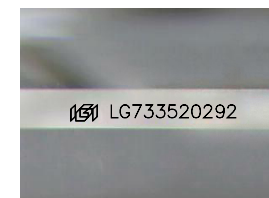
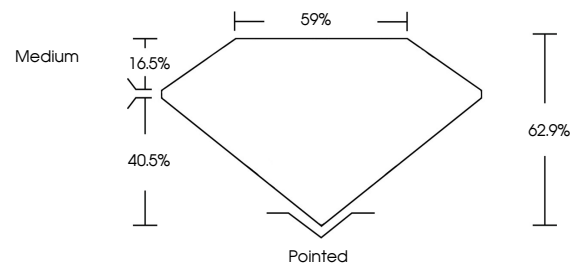
Carat Weight **1.84 CARAT**
Color Grade **FANCY INTENSE PINK**
Clarity Grade **VS 2**

ADDITIONAL GRADING INFORMATION

Polish **EXCELLENT**
Symmetry **EXCELLENT**
Fluorescence **MEDIUM BLUE**
Inscription(s) **LG733520292**

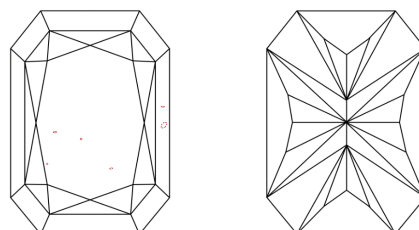
Comments: This Laboratory Grown Diamond was created by Chemical Vapor Deposition (CVD) growth process. Indications of post-growth treatment.

PROPORTIONS



Sample Image Used

CLARITY CHARACTERISTICS



KEY TO SYMBOLS

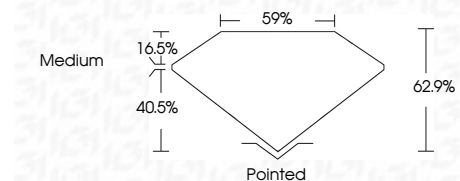
Red symbols indicate internal characteristics.
Green symbols indicate external characteristics.

COLOR

D E F G H I J Faint Very Light Light

CLARITY

FL	IF	VS ¹⁻²	VS ¹⁻²	SI ¹⁻²	I ¹⁻³
Flawless	Internally Flawless	Very Very Slightly Included	Very Slightly Included	Slightly Included	Included



ADDITIONAL GRADING INFORMATION

Polish **EXCELLENT**
Symmetry **EXCELLENT**
Fluorescence **MEDIUM BLUE**
Inscription(s) **LG733520292**
Comments: This Laboratory Grown Diamond was created by Chemical Vapor Deposition (CVD) growth process. Indications of post-growth treatment.



IGI



September 17, 2025
IGI Report No **LG733520292**
CUT CORNERED RECT. MODIFIED BRILLIANT
9.01 X 5.95 X 3.74 MM
Carat Weight **1.84 CARAT**
Color Grade **FANCY INTENSE PINK**
Clarity Grade **VS 2**
Depth **40.5%**
Table **16.5%**
Girdle **Medium**
Culet **Pointed**
Polish **EXCELLENT**
Symmetry **EXCELLENT**
Fluorescence **MEDIUM BLUE**
Inscription(s) **LG733520292**

Comments: This Laboratory Grown Diamond was created by Chemical Vapor Deposition (CVD) growth process. Indications of post-growth treatment.