



ELECTRONIC COPY

LG733512478
Report verification at igi.org



November 20, 2025

IGI Report Number **LG733512478**

Description **LABORATORY GROWN DIAMOND**

Shape and Cutting Style **OVAL BRILLIANT**

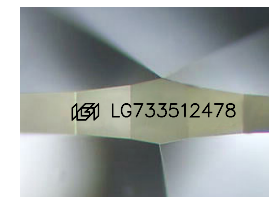
Measurements **8.11 X 5.90 X 3.38 MM**

GRADING RESULTS

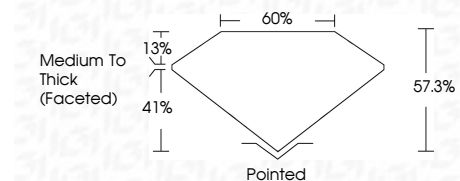
Carat Weight **1.00 CARAT**

Color Grade **D**

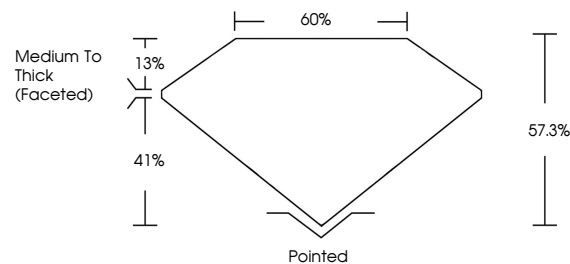
Clarity Grade **VVS 2**



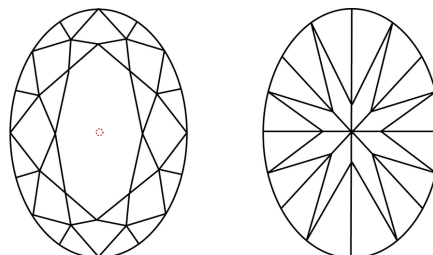
Sample Image Used



PROPORTIONS



CLARITY CHARACTERISTICS



KEY TO SYMBOLS

Red symbols indicate internal characteristics.
Green symbols indicate external characteristics.

COLOR

D E F G H I J Faint Very Light Light

CLARITY

FL	IF	VVS ¹⁻²	VS ¹⁻²	SI ¹⁻²	I ¹⁻³
Flawless	Internally Flawless	Very Very Slightly Included	Very Slightly Included	Slightly Included	Included

ADDITIONAL GRADING INFORMATION

Polish **EXCELLENT**

Symmetry **VERY GOOD**

Fluorescence **NONE**

Inscription(s) **IGI LG733512478**

Comments: As Grown - No indication of post-growth treatment.

This Laboratory Grown Diamond was created by High Pressure High Temperature (HPHT) growth process. Type II



IGI



November 20, 2025
IGI Report No LG733512478

OVAL BRILLIANT

8.11 X 5.90 X 3.38 MM

Carat Weight **1.00 CARAT**

Color Grade **D**

Clarity Grade **VVS 2**

Depth **57.3%**

Table **60%**

Girdle **Medium To Thick (Faceted)**

Culet **Pointed**

Polish **EXCELLENT**

Symmetry **VERY GOOD**

Fluorescence **NONE**

Inscription(s) **IGI LG733512478**

Comments: As Grown - No indication of post-growth treatment. This Laboratory Grown Diamond was created by High Pressure High Temperature (HPHT) growth process. Type II