



ELECTRONIC COPY

LG733510791
Report verification at igi.org



December 31, 2025
IGI Report Number **LG733510791**
Description **LABORATORY GROWN DIAMOND**
Shape and Cutting Style **CUSHION MODIFIED BRILLIANT**
Measurements **6.10 X 5.59 X 3.67 MM**
GRADING RESULTS
Carat Weight **1.07 CARAT**
Color Grade **FANCY INTENSE PINK**
Clarity Grade **VVS 1**

LABORATORY GROWN DIAMOND REPORT

December 31, 2025
IGI Report Number **LG733510791**
Description **LABORATORY GROWN DIAMOND**
Shape and Cutting Style **CUSHION MODIFIED BRILLIANT**
Measurements **6.10 X 5.59 X 3.67 MM**

GRADING RESULTS

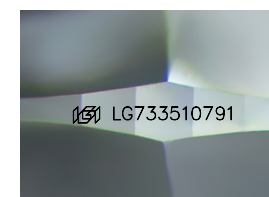
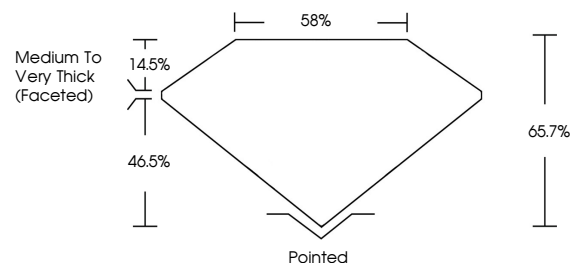
Carat Weight **1.07 CARAT**
Color Grade **FANCY INTENSE PINK**
Clarity Grade **VVS 1**

ADDITIONAL GRADING INFORMATION

Polish **VERY GOOD**
Symmetry **VERY GOOD**
Fluorescence **SLIGHT**
Inscription(s) **LG733510791**

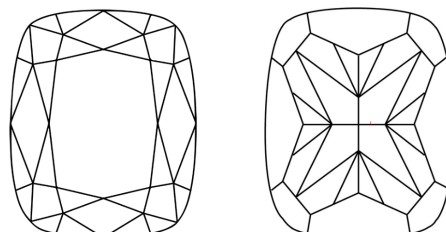
Comments: This Laboratory Grown Diamond was created by High Pressure High Temperature (HPHT) growth process. Indications of post-growth treatment.

PROPORTIONS



Sample Image Used

CLARITY CHARACTERISTICS



KEY TO SYMBOLS

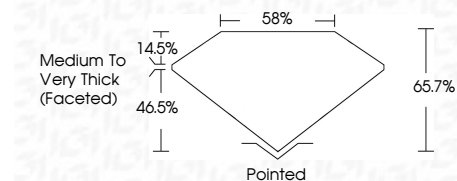
Red symbols indicate internal characteristics.
Green symbols indicate external characteristics.

COLOR

D E F G H I J Faint Very Light Light

CLARITY

FL	IF	VVS ¹⁻²	VS ¹⁻²	SI ¹⁻²	I ¹⁻³
Flawless	Internally Flawless	Very Very Slightly Included	Very Slightly Included	Slightly Included	Included



ADDITIONAL GRADING INFORMATION

Polish **VERY GOOD**
Symmetry **VERY GOOD**
Fluorescence **SLIGHT**
Inscription(s) **LG733510791**
Comments: This Laboratory Grown Diamond was created by High Pressure High Temperature (HPHT) growth process. Indications of post-growth treatment.



December 31, 2025
IGI Report No **LG733510791**
CUSHION MODIFIED BRILLIANT
6.10 X 5.59 X 3.67 MM
Carat Weight **1.07 CARAT**
Color Grade **FANCY INTENSE PINK**
Clarity Grade **VVS 1**
Depth **65.7%**
Table **58%**
Girdle **Medium to Very Thick (Faceted)**
Culet **Pointed**
Polish **VERY GOOD**
Symmetry **VERY GOOD**
Fluorescence **SLIGHT**
Inscription(s) **LG733510791**
Comments: This Laboratory Grown Diamond was created by High Pressure High Temperature (HPHT) growth process. Indications of post-growth treatment.