



ELECTRONIC COPY

LABORATORY GROWN DIAMOND REPORT

November 8, 2025	
IGI Report Number	LG733510305
Description	LABORATORY GROWN DIAMOND
Shape and Cutting Style	ROUND BRILLIANT
Measurements	9.32 - 9.39 X 5.59 MM

GRADING RESULTS

Carat Weight	3.03 CARATS
Color Grade	E
Clarity Grade	VVS 2
Cut Grade	IDEAL

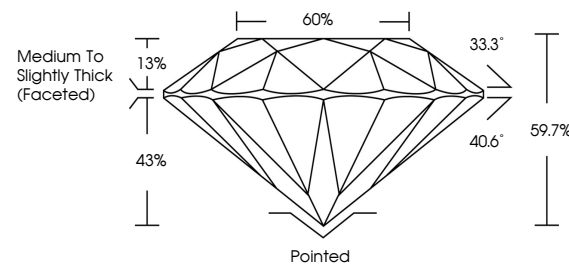
ADDITIONAL GRADING INFORMATION

Polish	EXCELLENT
Symmetry	EXCELLENT
Fluorescence	NONE
Inscription(s)	 LG733510305

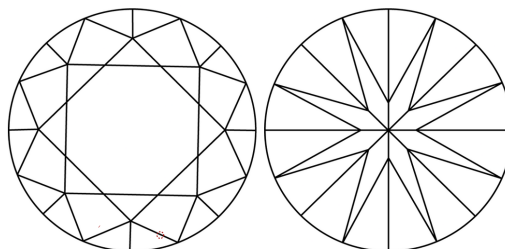
Comments: As Grown - No indication of post-growth treatment.
This Laboratory Grown Diamond was created by High Pressure High Temperature (HPHT) growth process.
Type II

LG733510305
Report verification at igi.org

PROPORTIONS

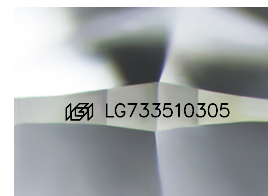


CLARITY CHARACTERISTICS



KEY TO SYMBOLS

Red symbols indicate internal characteristics.
Green symbols indicate external characteristics.



Sample Image Used

COLOR

D E F G H I J Faint Very Light Light

CLARITY

FL	IF	VVS ¹⁻²	VS ¹⁻²	SI ¹⁻²	I ¹⁻³
Flawless	Internally Flawless	Very Very Slightly Included	Very Slightly Included	Slightly Included	Included

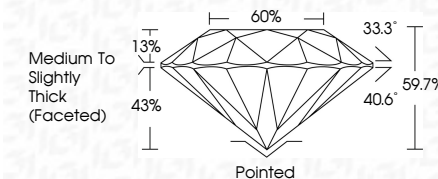
LABORATORY GROWN DIAMOND REPORT




November 8, 2025	
IGI Report Number	LG733510305
Description	LABORATORY GROWN DIAMOND
Shape and Cutting Style	ROUND BRILLIANT
Measurements	9.32 - 9.39 X 5.59 MM

GRADING RESULTS

Carat Weight	3.03 CARATS
Color Grade	E
Clarity Grade	VVS 2
Cut Grade	IDEAL



ADDITIONAL GRADING INFORMATION

Polish	EXCELLENT
Symmetry	EXCELLENT
Fluorescence	NONE
Inscription(s)	 LG7335 10305
Comments: As Grown - No indication of post-growth treatment.	
This Laboratory Grown Diamond was created by High Pressure High Temperature (HPHT) growth process.	
Type II	



© IGI 2020, International Gemological Institute

FD - 10 20



THIS DOCUMENT WAS PRODUCED WITH THE FOLLOWING SECURITY MEASURES: SPECIAL DOCUMENT PAPER, INK SCREENS, WATERMARK, BACKGROUND DESIGNS, HOLOGRAM AND OTHER SECURITY FEATURES NOT LISTED AND DO EXCEED DOCUMENT SECURITY INDUSTRY GUIDELINE

www.igi.org

November 8, 2025
GI Report No LG733510305
ROUND BRILLIANT

3.32 - 9.97 X 5.59 MM	3.03 CARATS	
Carat Weight	VVS 2	Pointed
Color Grade	IDEAL	EXCELLENT
Clarity Grade	89.7%	EXCELLENT
Cut Grade	60%	NONE
Depth	Medium to Slightly Thick (Faceted)	
Table		
Grade		
Culet		
Polish		
Symmetry		
Fluorescence		

Comments:
As Grown - No indication of post-growth treatment.