



ELECTRONIC COPY

LG733510047
Report verification at igi.org



October 28, 2025

IGI Report Number **LG733510047**

Description **LABORATORY GROWN DIAMOND**

Shape and Cutting Style **CUT CORNERED
RECTANGULAR MODIFIED
BRILLIANT**

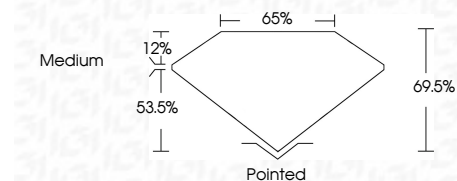
Measurements **8.58 X 6.42 X 4.46 MM**

GRADING RESULTS

Carat Weight **2.05 CARATS**

Color Grade **D**

Clarity Grade **VVS 1**



ADDITIONAL GRADING INFORMATION

Polish **EXCELLENT**

Symmetry **EXCELLENT**

Fluorescence **NONE**

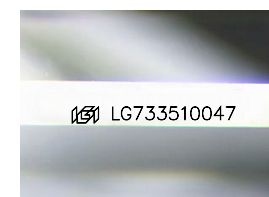
Inscription(s) **IGI LG733510047**

Comments: As Grown - No indication of post-growth treatment.

This Laboratory Grown Diamond was created by High Pressure High Temperature (HPHT) growth process. Type II

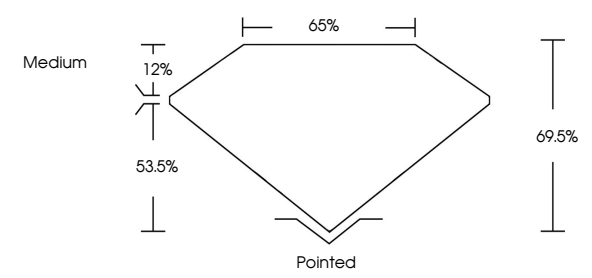


October 28, 2025
IGI Report No LG733510047
CUT CORNERED RECT. MODIFIED BRILLIANT
8.58 X 6.42 X 4.46 MM
2.05 CARATS
D
2.05 CARATS
D
VVS 1
69.5%
53.5%
Medium
Pointed
EXCELLENT
EXCELLENT
NONE
IGI LG733510047
Comments: As Grown - No indication of post-growth treatment.
This Laboratory Grown Diamond was created by High Pressure High Temperature (HPHT) growth process. Type II

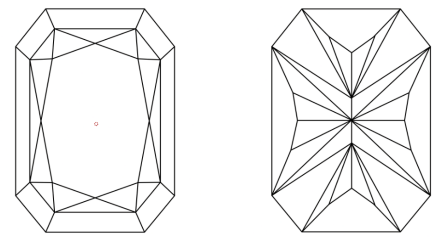


Sample Image Used

PROPORTIONS



CLARITY CHARACTERISTICS



KEY TO SYMBOLS

Red symbols indicate internal characteristics.
Green symbols indicate external characteristics.

COLOR

D E F G H I J Faint Very Light Light

CLARITY

FL	IF	VVS ¹⁻²	VS ¹⁻²	SI ¹⁻²	I ¹⁻³
Flawless	Internally Flawless	Very Very Slightly Included	Very Slightly Included	Slightly Included	Included

