



November 27, 2025

IGI Report Number LG733508551

SHIELD STEP CUT
LABORATORY GROWN DIAMOND
5.51 X 5.18 X 2.99 MM

Carat Weight	0.51 CARAT
Color Grade	F
Clarity Grade	VVS 2
Polish	VERY GOOD
Symmetry	VERY GOOD
Fluorescence	NONE
Inscription(s)	IGI LG733508551

Comments: As Grown - No indication of post-growth treatment. This Laboratory Grown Diamond was created by High Pressure High Temperature (HPHT) growth process. Type II

LABORATORY GROWN DIAMOND REPORT

November 27, 2025

IGI Report Number **LG733508551**

Description **LABORATORY GROWN DIAMOND**

Shape and Cutting Style **SHIELD STEP CUT**

Measurements **5.51 X 5.18 X 2.99 MM**

GRADING RESULTS

Carat Weight **0.51 CARAT**

Color Grade **F**

Clarity Grade **VVS 2**

ADDITIONAL GRADING INFORMATION

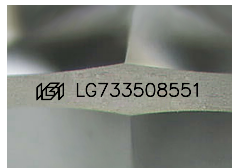
Polish **VERY GOOD**

Symmetry **VERY GOOD**

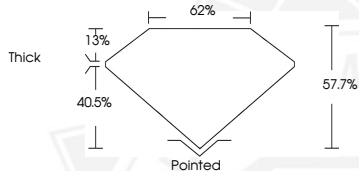
Fluorescence **NONE**

Inscription(s) **IGI LG733508551**

Comments: As Grown - No indication of post-growth treatment. This Laboratory Grown Diamond was created by High Pressure High Temperature (HPHT) growth process. Type II



Sample Image Used



November 27, 2025

IGI Report Number LG733508551

SHIELD STEP CUT
LABORATORY GROWN DIAMOND
5.51 X 5.18 X 2.99 MM

Carat Weight	0.51 CARAT
Color Grade	F
Clarity Grade	VVS 2
Polish	VERY GOOD
Symmetry	VERY GOOD
Fluorescence	NONE
Inscription(s)	IGI LG733508551

Comments: As Grown - No indication of post-growth treatment. This Laboratory Grown Diamond was created by High Pressure High Temperature (HPHT) growth process. Type II



THIS DOCUMENT WAS PRODUCED WITH THE FOLLOWING SECURITY MEASURES: SPECIAL DOCUMENT PAPER, INK SCREENS, WATERMARK, BACKGROUND DESIGNS, HOLOGRAM AND OTHER SECURITY FEATURES NOT LISTED AND DO EXCEED DOCUMENT SECURITY INDUSTRY GUIDELINES.