



November 27, 2025

**IGI Report Number** LG733508529  
**HALF MOON MODIFIED BRILLIANT  
LABORATORY GROWN DIAMOND**  
**7.36 X 4.88 X 3.01 MM**

**Carat Weight** 0.69 CARAT  
**Color Grade** D  
**Clarity Grade** VVS 2  
**Polish** VERY GOOD  
**Symmetry** EXCELLENT  
**Fluorescence** NONE  
**Inscription(s)** IGI LG733508529

**Comments:** As Grown - No indication of post-growth treatment. This Laboratory Grown Diamond was created by High Pressure High Temperature (HPHT) growth process. Type II

**LABORATORY GROWN DIAMOND REPORT**

November 27, 2025  
IGI Report Number **LG733508529**  
Description **LABORATORY GROWN DIAMOND**  
Shape and Cutting Style **HALF MOON MODIFIED BRILLIANT**  
Measurements **7.36 X 4.88 X 3.01 MM**

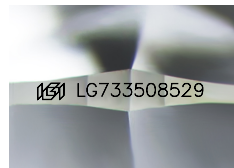
**GRADING RESULTS**

**Carat Weight** 0.69 CARAT  
**Color Grade** D  
**Clarity Grade** VVS 2

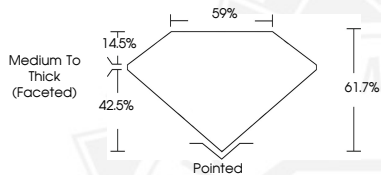
**ADDITIONAL GRADING INFORMATION**

**Polish** VERY GOOD  
**Symmetry** EXCELLENT  
**Fluorescence** NONE  
**Inscription(s)** IGI LG733508529

**Comments:** As Grown - No indication of post-growth treatment. This Laboratory Grown Diamond was created by High Pressure High Temperature (HPHT) growth process. Type II



Sample Image Used



November 27, 2025

**IGI Report Number** LG733508529  
**HALF MOON MODIFIED BRILLIANT  
LABORATORY GROWN DIAMOND**  
**7.36 X 4.88 X 3.01 MM**

**Carat Weight** 0.69 CARAT  
**Color Grade** D  
**Clarity Grade** VVS 2  
**Polish** VERY GOOD  
**Symmetry** EXCELLENT  
**Fluorescence** NONE  
**Inscription(s)** IGI LG733508529

**Comments:** As Grown - No indication of post-growth treatment. This Laboratory Grown Diamond was created by High Pressure High Temperature (HPHT) growth process. Type II



THIS DOCUMENT WAS PRODUCED WITH THE FOLLOWING SECURITY MEASURES: SPECIAL DOCUMENT PAPER, INK SCREENS, WATERMARK, BACKGROUND DESIGNS, HOLOGRAM AND OTHER SECURITY FEATURES NOT LISTED AND DO EXCEED DOCUMENT SECURITY INDUSTRY GUIDELINES.