



LABORATORY GROWN DIAMOND REPORT

November 27, 2025

IGI Report Number **LG733508524**

Description **LABORATORY GROWN DIAMOND**

Shape and Cutting Style **HALF MOON MODIFIED BRILLIANT**

Measurements **4.95 X 7.34 X 2.96 MM**

GRADING RESULTS

Carat Weight **0.69 CARAT**

Color Grade **D**

Clarity Grade **VVS 1**

ADDITIONAL GRADING INFORMATION

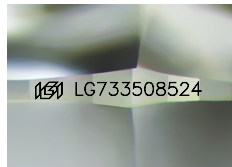
Polish **VERY GOOD**

Symmetry **VERY GOOD**

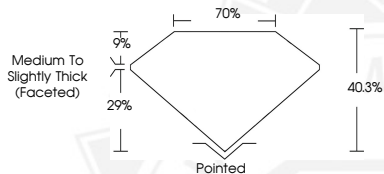
Fluorescence **NONE**

Inscription(s) **IGI LG733508524**

Comments: As Grown - No indication of post-growth treatment.
This Laboratory Grown Diamond was created by High Pressure High Temperature (HPHT) growth process.
Type II



Sample Image Used



November 27, 2025

IGI Report Number **LG733508524**
HALF MOON MODIFIED BRILLIANT
LABORATORY GROWN DIAMOND
4.95 X 7.34 X 2.96 MM

Carat Weight **0.69 CARAT**
Color Grade **D**
Clarity Grade **VVS 1**
Polish **VERY GOOD**
Symmetry **VERY GOOD**
Fluorescence **NONE**
Inscription(s) **IGI LG733508524**

Comments: As Grown - No indication of post-growth treatment. This Laboratory Grown Diamond was created by High Pressure High Temperature (HPHT) growth process. Type II



November 27, 2025

IGI Report Number **LG733508524**
HALF MOON MODIFIED BRILLIANT
LABORATORY GROWN DIAMOND
4.95 X 7.34 X 2.96 MM

Carat Weight **0.69 CARAT**
Color Grade **D**
Clarity Grade **VVS 1**
Polish **VERY GOOD**
Symmetry **VERY GOOD**
Fluorescence **NONE**
Inscription(s) **IGI LG733508524**

Comments: As Grown - No indication of post-growth treatment. This Laboratory Grown Diamond was created by High Pressure High Temperature (HPHT) growth process. Type II



THIS DOCUMENT WAS PRODUCED WITH THE FOLLOWING SECURITY MEASURES: SPECIAL DOCUMENT PAPER, INK SCREENS, WATERMARK, BACKGROUND DESIGNS, HOLOGRAM AND OTHER SECURITY FEATURES NOT LISTED AND DO EXCEED DOCUMENT SECURITY INDUSTRY GUIDELINES.