



LABORATORY GROWN DIAMOND REPORT

November 27, 2025

IGI Report Number **LG733508509**

Description **LABORATORY GROWN DIAMOND**

Shape and Cutting Style **HEXAGONAL MODIFIED STEP CUT**

Measurements **6.05 X 5.69 X 2.98 MM**

GRADING RESULTS

Carat Weight **0.66 CARAT**

Color Grade **D**

Clarity Grade **VVS 1**

ADDITIONAL GRADING INFORMATION

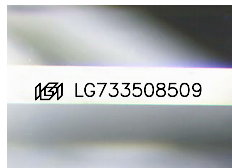
Polish **VERY GOOD**

Symmetry **EXCELLENT**

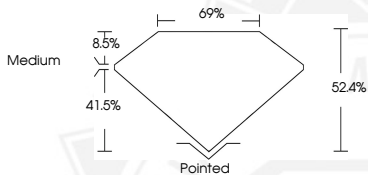
Fluorescence **NONE**

Inscription(s) **IGI LG733508509**

Comments: As Grown - No indication of post-growth treatment. This Laboratory Grown Diamond was created by High Pressure High Temperature (HPHT) growth process. Type II



Sample Image Used



November 27, 2025

IGI Report Number **LG733508509**
HEXAGONAL MODIFIED STEP CUT
LABORATORY GROWN DIAMOND
6.05 X 5.69 X 2.98 MM

Carat Weight **0.66 CARAT**
Color Grade **D**
Clarity Grade **VVS 1**
Polish **VERY GOOD**
Symmetry **EXCELLENT**
Fluorescence **NONE**
Inscription(s) **IGI LG733508509**

Comments: As Grown - No indication of post-growth treatment. This Laboratory Grown Diamond was created by High Pressure High Temperature (HPHT) growth process. Type II



November 27, 2025

IGI Report Number **LG733508509**
HEXAGONAL MODIFIED STEP CUT
LABORATORY GROWN DIAMOND
6.05 X 5.69 X 2.98 MM

Carat Weight **0.66 CARAT**
Color Grade **D**
Clarity Grade **VVS 1**
Polish **EXCELLENT**
Symmetry **EXCELLENT**
Fluorescence **NONE**
Inscription(s) **IGI LG733508509**

Comments: As Grown - No indication of post-growth treatment. This Laboratory Grown Diamond was created by High Pressure High Temperature (HPHT) growth process. Type II

THIS DOCUMENT WAS PRODUCED WITH THE FOLLOWING SECURITY MEASURES: SPECIAL DOCUMENT PAPER, INK SCREENS, WATERMARK, BACKGROUND DESIGNS, HOLOGRAM AND OTHER SECURITY FEATURES NOT LISTED AND DO EXCEED DOCUMENT SECURITY INDUSTRY GUIDELINES.