



November 27, 2025

**IGI Report Number** LG733508502  
**HEXAGONAL MODIFIED STEP CUT  
LABORATORY GROWN DIAMOND  
6.00 X 5.64 X 2.77 MM**

**Carat Weight** 0.62 CARAT  
**Color Grade** D  
**Clarity Grade** VVS 1  
**Polish** VERY GOOD  
**Symmetry** VERY GOOD  
**Fluorescence** NONE  
**Inscription(s)** IGI LG733508502

**Comments:** As Grown - No indication of post-growth treatment. This Laboratory Grown Diamond was created by High Pressure High Temperature (HPHT) growth process. Type II

**LABORATORY GROWN DIAMOND REPORT**

November 27, 2025

IGI Report Number **LG733508502**

Description **LABORATORY GROWN DIAMOND**

Shape and Cutting Style **HEXAGONAL MODIFIED STEP CUT**

Measurements **6.00 X 5.64 X 2.77 MM**

**GRADING RESULTS**

**Carat Weight** 0.62 CARAT

**Color Grade** D

**Clarity Grade** VVS 1

**ADDITIONAL GRADING INFORMATION**

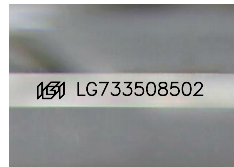
**Polish** VERY GOOD

**Symmetry** VERY GOOD

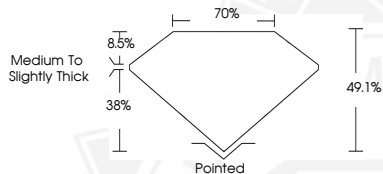
**Fluorescence** NONE

**Inscription(s)** IGI LG733508502

**Comments:** As Grown - No indication of post-growth treatment. This Laboratory Grown Diamond was created by High Pressure High Temperature (HPHT) growth process. Type II



Sample Image Used



November 27, 2025

**IGI Report Number** LG733508502  
**HEXAGONAL MODIFIED STEP CUT  
LABORATORY GROWN DIAMOND  
6.00 X 5.64 X 2.77 MM**

**Carat Weight** 0.62 CARAT  
**Color Grade** D  
**Clarity Grade** VVS 1  
**Polish** VERY GOOD  
**Symmetry** VERY GOOD  
**Fluorescence** NONE  
**Inscription(s)** IGI LG733508502

**Comments:** As Grown - No indication of post-growth treatment. This Laboratory Grown Diamond was created by High Pressure High Temperature (HPHT) growth process. Type II



THIS DOCUMENT WAS PRODUCED WITH THE FOLLOWING SECURITY MEASURES: SPECIAL DOCUMENT PAPER, INK SCREENS, WATERMARK, BACKGROUND DESIGNS, HOLOGRAM AND OTHER SECURITY FEATURES NOT LISTED AND DO EXCEED DOCUMENT SECURITY INDUSTRY GUIDELINES.