



ELECTRONIC COPY

LG733508140
Report verification at igi.org



October 3, 2025
IGI Report Number **LG733508140**
Description **LABORATORY GROWN DIAMOND**
Shape and Cutting Style **CUSHION MODIFIED BRILLIANT**
Measurements **10.65 X 8.25 X 5.48 MM**
GRADING RESULTS
Carat Weight **3.54 CARATS**
Color Grade **E**
Clarity Grade **VS 2**

LABORATORY GROWN DIAMOND REPORT

October 3, 2025
IGI Report Number **LG733508140**
Description **LABORATORY GROWN DIAMOND**
Shape and Cutting Style **CUSHION MODIFIED BRILLIANT**
Measurements **10.65 X 8.25 X 5.48 MM**

GRADING RESULTS

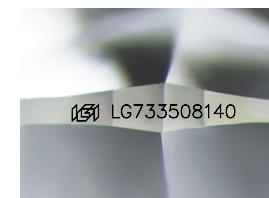
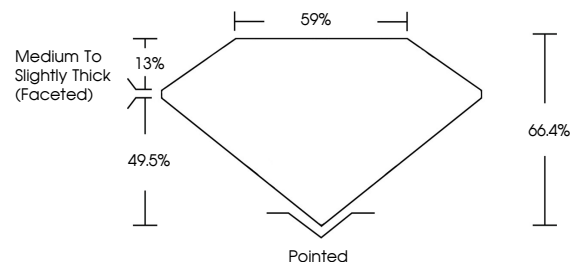
Carat Weight **3.54 CARATS**
Color Grade **E**
Clarity Grade **VS 2**

ADDITIONAL GRADING INFORMATION

Polish **EXCELLENT**
Symmetry **EXCELLENT**
Fluorescence **NONE**
Inscription(s) **IGI LG733508140**

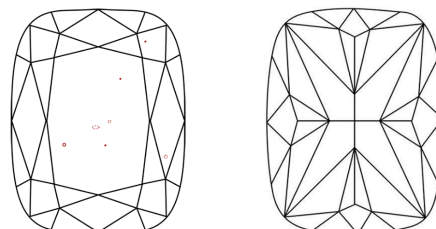
Comments: Pre-existing laser inscription on girdle.
This Laboratory Grown Diamond was created by
Chemical Vapor Deposition (CVD) growth process.
Type IIa

PROPORTIONS



Sample Image Used

CLARITY CHARACTERISTICS



KEY TO SYMBOLS

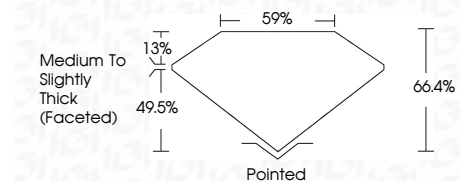
Red symbols indicate internal characteristics.
Green symbols indicate external characteristics.

COLOR

D E F G H I J Faint Very Light Light

CLARITY

FL	IF	VS ¹⁻²	VS ¹⁻²	SI ¹⁻²	I ¹⁻³
Flawless	Internally Flawless	Very Very Slightly Included	Very Slightly Included	Slightly Included	Included



ADDITIONAL GRADING INFORMATION

Polish **EXCELLENT**
Symmetry **EXCELLENT**
Fluorescence **NONE**
Inscription(s) **IGI LG733508140**
Comments: Pre-existing laser inscription on girdle.
This Laboratory Grown Diamond was created by
Chemical Vapor Deposition (CVD) growth process.
Type IIa



October 3, 2025
IGI Report No LG733508140
CUSHION MODIFIED BRILLIANT
10.65 X 8.25 X 5.48 MM
3.54 CARATS
E
3.54 CARATS
E
VS 2
66.4%
49.5%
13%
59%
Medium to Slightly Thick (Faceted)
Pointed
EXCELLENT
EXCELLENT
NONE
IGI LG733508140

Comments: Pre-existing laser inscription on girdle.
This Laboratory Grown Diamond was created by
Chemical Vapor Deposition (CVD) growth process.
Type IIa