



ELECTRONIC COPY

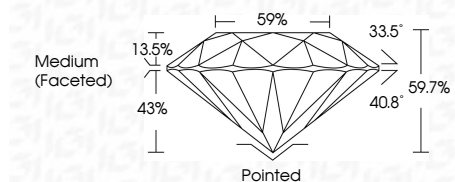
LG733506861 Report verification at igi.org



September 10, 2025 IGI Report Number LG733506861 Description LABORATORY GROWN DIAMOND Shape and Cutting Style ROUND BRILLIANT Measurements 6.96 - 7.02 X 4.17 MM

GRADING RESULTS

Carat Weight 1.23 CARAT Color Grade D Clarity Grade VS 1 Cut Grade IDEAL



ADDITIONAL GRADING INFORMATION

Polish EXCELLENT Symmetry EXCELLENT Fluorescence NONE Inscription(s) IGI LG733506861 Comments: This Laboratory Grown Diamond was created by Chemical Vapor Deposition (CVD) growth process. Type IIa



September 10, 2025 IGI Report No LG733506861 ROUND BRILLIANT 6.96 - 7.02 X 4.17 MM 1.23 CARAT D VS 1 IDEAL 59.7% 59% Medium (Faceted) Pointed EXCELLENT EXCELLENT NONE IGI LG733506861 Comments: This Laboratory Grown Diamond was created by Chemical Vapor Deposition (CVD) growth process. Type IIa

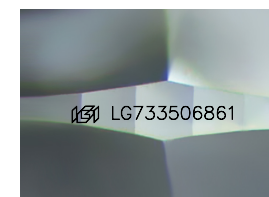
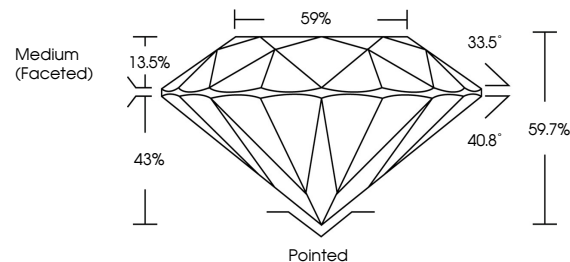
September 10, 2025 IGI Report Number LG733506861 Description LABORATORY GROWN DIAMOND Shape and Cutting Style ROUND BRILLIANT Measurements 6.96 - 7.02 X 4.17 MM GRADING RESULTS Carat Weight 1.23 CARAT Color Grade D Clarity Grade VS 1 Cut Grade IDEAL

ADDITIONAL GRADING INFORMATION

Polish EXCELLENT Symmetry EXCELLENT Fluorescence NONE Inscription(s) IGI LG733506861

Comments: This Laboratory Grown Diamond was created by Chemical Vapor Deposition (CVD) growth process. Type IIa

PROPORTIONS



Sample Image Used

COLOR

D E F G H I J Faint Very Light Light

CLARITY

IF WS 1-2 VS 1-2 SI 1-2 I 1-3 Internally Flawless Very Very Slightly Included Very Slightly Included Slightly Included Included

