



ELECTRONIC COPY

LG733506601
Report verification at igi.org



September 9, 2025
IGI Report Number **LG733506601**
Description **LABORATORY GROWN DIAMOND**
Shape and Cutting Style **ROUND MIXED CUT**
Measurements **7.22 - 7.25 X 4.49 MM**

GRADING RESULTS

Carat Weight **1.64 CARAT**
Color Grade **E**
Clarity Grade **VVS 2**

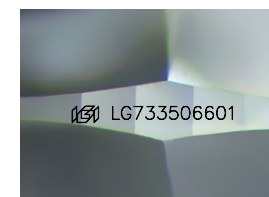
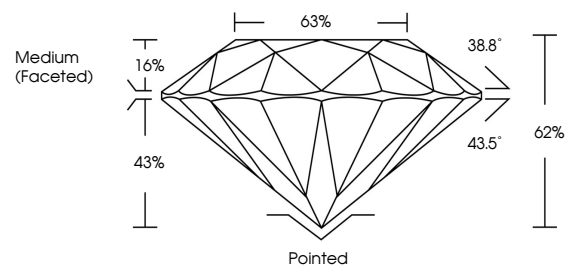
September 9, 2025
IGI Report Number **LG733506601**
Description **LABORATORY GROWN DIAMOND**
Shape and Cutting Style **ROUND MIXED CUT**
Measurements **7.22 - 7.25 X 4.49 MM**
GRADING RESULTS
Carat Weight **1.64 CARAT**
Color Grade **E**
Clarity Grade **VVS 2**

ADDITIONAL GRADING INFORMATION

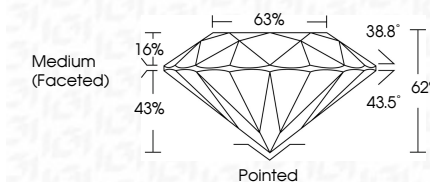
Polish **EXCELLENT**
Symmetry **EXCELLENT**
Fluorescence **NONE**
Inscription(s) **IGI LG733506601**

Comments: This Laboratory Grown Diamond was created by Chemical Vapor Deposition (CVD) growth process.
Type IIa

PROPORTIONS



Sample Image Used



COLOR

D E F G H I J Faint Very Light Light

CLARITY

IF	VS ¹⁻²	VS ¹⁻²	SI ¹⁻²	I ¹⁻³
Internally Flawless	Very Very Slightly Included	Very Slightly Included	Slightly Included	Included

ADDITIONAL GRADING INFORMATION

Polish **EXCELLENT**
Symmetry **EXCELLENT**
Fluorescence **NONE**
Inscription(s) **IGI LG733506601**
Comments: This Laboratory Grown Diamond was created by Chemical Vapor Deposition (CVD) growth process.
Type IIa



IGI

September 9, 2025
IGI Report No LG733506601
ROUND MIXED CUT
1.64 CARAT
E
VVS 2
62%
63%
Medium (Faceted)
Pointed
EXCELLENT
EXCELLENT
NONE
IGI LG733506601

Comments: This Laboratory Grown Diamond was created by Chemical Vapor Deposition (CVD) growth process.
Type IIa