



ELECTRONIC COPY

LABORATORY GROWN DIAMOND REPORT

September 16, 2025  
IGI Report Number LG733506359  
Description LABORATORY GROWN DIAMOND  
Shape and Cutting Style CUSHION MODIFIED BRILLIANT  
Measurements 13.30 X 9.81 X 6.27 MM

GRADING RESULTS

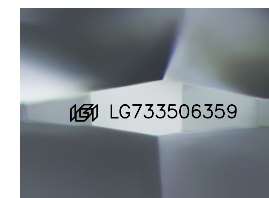
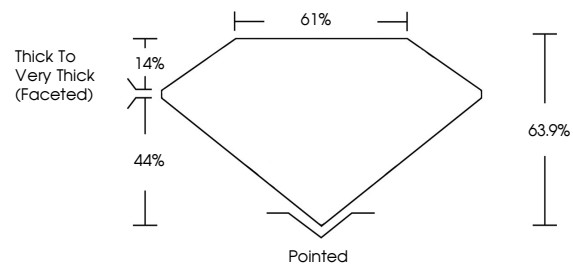
Carat Weight 7.09 CARATS  
Color Grade FANCY INTENSE YELLOW  
Clarity Grade VS 1

ADDITIONAL GRADING INFORMATION

Polish EXCELLENT  
Symmetry EXCELLENT  
Fluorescence NONE  
Inscription(s) IGI LG733506359

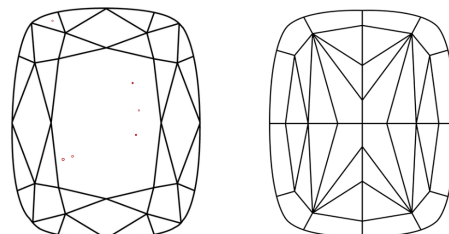
Comments: This Laboratory Grown Diamond was created by Chemical Vapor Deposition (CVD) growth process.

PROPORTIONS



Sample Image Used

CLARITY CHARACTERISTICS



KEY TO SYMBOLS

Red symbols indicate internal characteristics.  
Green symbols indicate external characteristics.

COLOR

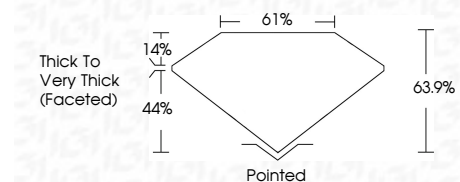
D E F G H I J Faint Very Light Light

CLARITY

IF WS<sup>1-2</sup> VS<sup>1-2</sup> SI<sup>1-2</sup> I<sup>1-3</sup>  
Internally Flawless Very Very Slightly Included Very Slightly Included Slightly Included Included



September 16, 2025  
IGI Report Number LG733506359  
Description LABORATORY GROWN DIAMOND  
Shape and Cutting Style CUSHION MODIFIED BRILLIANT  
Measurements 13.30 X 9.81 X 6.27 MM  
GRADING RESULTS  
Carat Weight 7.09 CARATS  
Color Grade FANCY INTENSE YELLOW  
Clarity Grade VS 1



ADDITIONAL GRADING INFORMATION

Polish EXCELLENT  
Symmetry EXCELLENT  
Fluorescence NONE  
Inscription(s) IGI LG733506359  
Comments: This Laboratory Grown Diamond was created by Chemical Vapor Deposition (CVD) growth process.



IGI



September 16, 2025  
IGI Report No LG733506359  
CUSHION MODIFIED BRILLIANT  
7.09 CARATS  
FANCY INTENSE YELLOW  
VS 1  
13.30 X 9.81 X 6.27 MM  
Color Grade FANCY INTENSE YELLOW  
Clarity Grade VS 1  
Depth 63.9%  
Table 61%  
Girdle Thick to Very Thick (Faceted)  
Culet Pointed  
Polish EXCELLENT  
Symmetry EXCELLENT  
Fluorescence NONE  
Inscription(s) IGI LG733506359  
Comments: This Laboratory Grown Diamond was created by Chemical Vapor Deposition (CVD) growth process.