



LABORATORY GROWN DIAMOND REPORT

September 9, 2025
 IGI Report Number **LG733503363**
 Description **LABORATORY GROWN DIAMOND**
 Shape and Cutting Style **PRINCESS CUT**
 Measurements **5.45 X 5.41 X 3.79 MM**

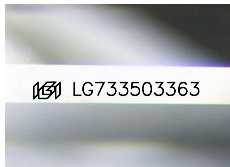
GRADING RESULTS

Carat Weight **0.94 CARAT**
 Color Grade **G**
 Clarity Grade **VVS 1**

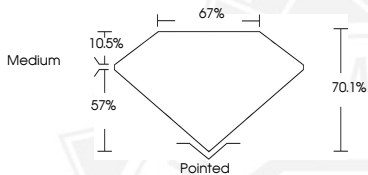
ADDITIONAL GRADING INFORMATION

Polish **EXCELLENT**
 Symmetry **EXCELLENT**
 Fluorescence **NONE**
 Inscription(s) **IGI LG733503363**

Comments: This Laboratory Grown Diamond was created by Chemical Vapor Deposition (CVD) growth process. Type IIa



Sample Image Used



September 9, 2025
 IGI Report Number **LG733503363**
PRINCESS CUT
LABORATORY GROWN DIAMOND
5.45 X 5.41 X 3.79 MM
 Carat Weight **0.94 CARAT**
 Color Grade **G**
 Clarity Grade **VVS 1**
 Polish **EXCELLENT**
 Symmetry **EXCELLENT**
 Fluorescence **NONE**
 Inscription(s) **IGI LG733503363**

Comments: This Laboratory Grown Diamond was created by Chemical Vapor Deposition (CVD) growth process. Type IIa



September 9, 2025
 IGI Report Number **LG733503363**
PRINCESS CUT
LABORATORY GROWN DIAMOND
5.45 X 5.41 X 3.79 MM
 Carat Weight **0.94 CARAT**
 Color Grade **G**
 Clarity Grade **VVS 1**
 Polish **EXCELLENT**
 Symmetry **EXCELLENT**
 Fluorescence **NONE**
 Inscription(s) **IGI LG733503363**

Comments: This Laboratory Grown Diamond was created by Chemical Vapor Deposition (CVD) growth process. Type IIa



THIS DOCUMENT WAS PRODUCED WITH THE FOLLOWING SECURITY MEASURES: SPECIAL DOCUMENT PAPER, INK SCREENS, WATERMARK, BACKGROUND DESIGNS, HOLOGRAM AND OTHER SECURITY FEATURES NOT LISTED AND DO EXCEED DOCUMENT SECURITY INDUSTRY GUIDELINES.