



**ELECTRONIC COPY**

LG733502859  
Report verification at igi.org



September 23, 2025  
IGI Report Number **LG733502859**  
Description **LABORATORY GROWN DIAMOND**  
Shape and Cutting Style **RECTANGULAR CUSHION MIXED CUT**  
Measurements **8.39 X 5.23 X 3.30 MM**  
**GRADING RESULTS**  
Carat Weight **1.56 CARAT**  
Color Grade **E**  
Clarity Grade **VS 1**

**LABORATORY GROWN DIAMOND REPORT**

September 23, 2025  
IGI Report Number **LG733502859**  
Description **LABORATORY GROWN DIAMOND**  
Shape and Cutting Style **RECTANGULAR CUSHION MIXED CUT**  
Measurements **8.39 X 5.23 X 3.30 MM**

**GRADING RESULTS**

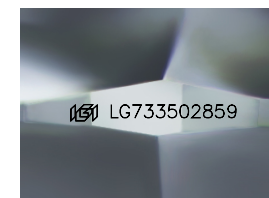
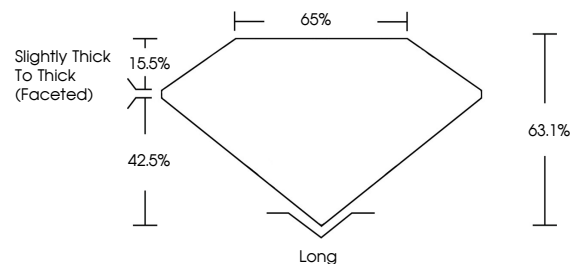
Carat Weight **1.56 CARAT**  
Color Grade **E**  
Clarity Grade **VS 1**

**ADDITIONAL GRADING INFORMATION**

Polish **EXCELLENT**  
Symmetry **EXCELLENT**  
Fluorescence **NONE**  
Inscription(s) **IGI LG733502859**

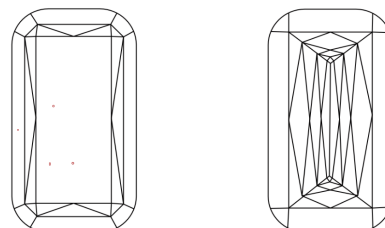
Comments: This Laboratory Grown Diamond was created by Chemical Vapor Deposition (CVD) growth process.  
Type IIa

**PROPORTIONS**



Sample Image Used

**CLARITY CHARACTERISTICS**



**KEY TO SYMBOLS**

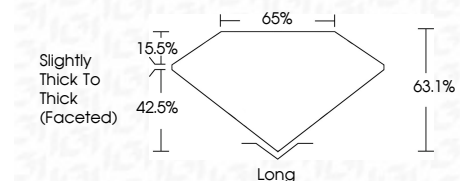
Red symbols indicate internal characteristics.  
Green symbols indicate external characteristics.

**COLOR**

D E F G H I J Faint Very Light Light

**CLARITY**

IF	VS <sup>1-2</sup>	VS <sup>1-2</sup>	SI <sup>1-2</sup>	I <sup>1-3</sup>
Internally Flawless	Very Very Slightly Included	Very Slightly Included	Slightly Included	Included



**ADDITIONAL GRADING INFORMATION**

Polish **EXCELLENT**  
Symmetry **EXCELLENT**  
Fluorescence **NONE**  
Inscription(s) **IGI LG733502859**  
Comments: This Laboratory Grown Diamond was created by Chemical Vapor Deposition (CVD) growth process.  
Type IIa



September 23, 2025  
IGI Report No LG733502859  
RECTANGULAR CUSHION MIXED CUT  
8.39 X 5.23 X 3.30 MM  
1.56 CARAT  
E  
VS 1  
63.1%  
65%  
Slightly Thick To Thick (Faceted)  
Long  
EXCELLENT  
EXCELLENT  
NONE  
IGI LG733502859  
Comments: This Laboratory Grown Diamond was created by Chemical Vapor Deposition (CVD) growth process.  
Type IIa