



ELECTRONIC COPY

LG733502261
Report verification at igi.org



September 14, 2025

IGI Report Number **LG733502261**

Description **LABORATORY GROWN DIAMOND**

Shape and Cutting Style **CUT CORNERED
RECTANGULAR MODIFIED
BRILLIANT**

Measurements **8.33 X 5.81 X 3.75 MM**

GRADING RESULTS

Carat Weight **1.71 CARAT**

Color Grade **FANCY VIVID PINK**

Clarity Grade **VS 1**

LABORATORY GROWN DIAMOND REPORT

September 14, 2025

IGI Report Number **LG733502261**

Description **LABORATORY GROWN DIAMOND**

Shape and Cutting Style **CUT CORNERED RECTANGULAR
MODIFIED BRILLIANT**

Measurements **8.33 X 5.81 X 3.75 MM**

GRADING RESULTS

Carat Weight **1.71 CARAT**

Color Grade **FANCY VIVID PINK**

Clarity Grade **VS 1**

ADDITIONAL GRADING INFORMATION

Polish **EXCELLENT**

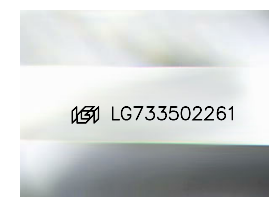
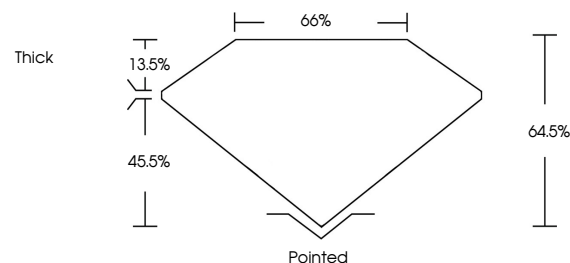
Symmetry **EXCELLENT**

Fluorescence **STRONG**

Inscription(s) **IGI LG733502261**

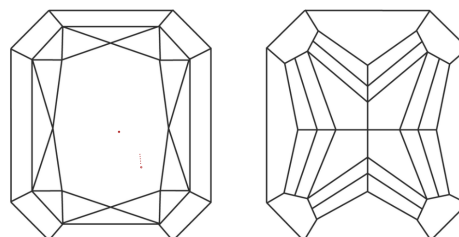
Comments: This Laboratory Grown Diamond was created by Chemical Vapor Deposition (CVD) growth process. Indications of post-growth treatment.

PROPORTIONS



Sample Image Used

CLARITY CHARACTERISTICS



KEY TO SYMBOLS

Red symbols indicate internal characteristics.
Green symbols indicate external characteristics.

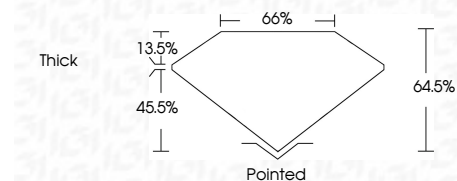
COLOR

D E F G H I J Faint Very Light Light

CLARITY

IF WS¹⁻² VS¹⁻² SI¹⁻² I¹⁻³

Internally Flawless Very Very Slightly Included Very Slightly Included Slightly Included Included



ADDITIONAL GRADING INFORMATION

Polish **EXCELLENT**

Symmetry **EXCELLENT**

Fluorescence **STRONG**

Inscription(s) **IGI LG733502261**

Comments: This Laboratory Grown Diamond was created by Chemical Vapor Deposition (CVD) growth process. Indications of post-growth treatment.



September 14, 2025	IGI Report No LG733502261	CUT CORNERED RECT. MODIFIED BRILLIANT	8.33 X 5.81 X 3.75 MM	1.71 CARAT	FANCY VIVID PINK	VS 1	64.5%	65%	Thick	Pointed	EXCELLENT	EXCELLENT	STRONG	IGI LG733502261
<p>Comments: This Laboratory Grown Diamond was created by Chemical Vapor Deposition (CVD) growth process. Indications of post-growth treatment.</p>														